

## Product datasheet for PH309248

### LIPG (NM\_006033) Human Mass Spec Standard

#### Product data:

Product Type:	Mass Spec Standards
Description:	LIPG MS Standard C13 and N15-labeled recombinant protein (NP_006024)
Species:	Human
Expression Host:	HEK293
Expression cDNA Clone or AA Sequence:	RC209248
Predicted MW:	56.8 kDa
Protein Sequence:	>Peptide sequence encoded by RC209248 Blue=ORF Red=Cloning site Green=Tag(s)  MSNSVPLLCFWSLICYFAAGSPVFGPEGRLKDLHKPKATQTEVKPSVRFNLRTSKDPEHEGCVLSVG HSQPLEDCSFNMTAKTFFIIHGWTMSGIFENWLHKLVSALHTREKDANVVVDWLPLAHQLYTDVNNNT RVVGHSIARMLDWLQEKDDFSLGNVHLIGYSLGAHVAGYAGNFVKGTVGRITGLDPAGPMFEGADIHKR LSPDDADFVDVLHTYTRSFGLSIGIQMPVGHIDIYPNGGDFQPGCGLNDVLGSIAYGTITEVVKCEHER AVHLFVDSL VNQDKPSFAFQCTDSNRFKKGI CLSCRKNRCNSIGYNAKKMRNKRNSKMYLKTRAGMPFR VYHYQMKIHVFSYKNMGEIEPTFYVTL YGTNADSQTLPLEIVERIEQNA TNTFL VYTEEDLDLLKIQ L TWE GASQSWYNLWKEFRSYLSQPRNPGRELNIRRI RVKSGETQRKLTFC TEDPENTSISPGQELWFRKC RDGWRMKNETSPTVELP SGPTRTRPLEQKLI SEEDLAANDILDYKDDDDKV  Recombinant protein using RC209248 also available, <a href="#">TP309248</a>
Tag:	C-Myc/DDK
Purity:	> 80% as determined by SDS-PAGE and Coomassie blue staining
Concentration:	>0.05 µg/µL as determined by microplate BCA method
Labeling Method:	Labeled with [U- 13C6, 15N4]-L-Arginine and [U- 13C6, 15N2]-L-Lysine
Buffer:	25 mM Tris-HCl, 100 mM glycine, pH 7.3
Storage:	Store at -80°C. Avoid repeated freeze-thaw cycles.
Stability:	Stable for 3 months from receipt of products under proper storage and handling conditions.
RefSeq:	<a href="#">NP_006024</a>
RefSeq Size:	4143
RefSeq ORF:	1500



[View online »](#)

**Synonyms:** EDL; EL; PRO719

**Locus ID:** 9388

**UniProt ID:** [Q9Y5X9](#), [A0A024R2B5](#)

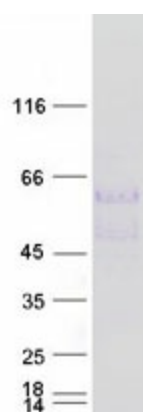
**Cytogenetics:** 18q21.1

**Summary:** The protein encoded by this gene has substantial phospholipase activity and may be involved in lipoprotein metabolism and vascular biology. This protein is designated a member of the TG lipase family by its sequence and characteristic lid region which provides substrate specificity for enzymes of the TG lipase family. [provided by RefSeq, Jul 2008]

**Protein Families:** Druggable Genome, Secreted Protein

**Protein Pathways:** Glycerolipid metabolism, Metabolic pathways

### Product images:



Coomassie blue staining of purified LIPG protein (Cat# [TP309248]). The protein was produced from HEK293T cells transfected with LIPG cDNA clone (Cat# [RC209248]) using MegaTran 2.0 (Cat# [TT210002]).