

Product datasheet for PH309239

EPM2AIP1 (NM_014805) Human Mass Spec Standard

Product data:

Product Type:	Mass Spec Standards
Description:	EPM2AIP1 MS Standard C13 and N15-labeled recombinant protein (NP_055620)
Species:	Human
Expression Host:	HEK293
Expression cDNA Clone or AA Sequence:	RC209239
Predicted MW:	70.4 kDa
Protein Sequence:	>RC209239 protein sequence Red=Cloning site Green=Tags(s)

MWMTPKRSKMEVDEALVFRPEWTQRYLVVEPPEGDGLCLVCRRLIVATRERDVRRHYEAEHEYERYVA
DGERAALVERLRQGDLPVASFPTPEERAARAGLGLCRLLALKGRGWGEDFYQCMEVLLREVLPEHVSVL
QGVDLSPDITRQRILSIDRNLNRQLFNRARDFKAYSLALDDQAFVAYENYLLVFIGVGPPELEVQEDLLT
IINLTHHFVSGALMSAILESQTAGLSLQRMVGLTTTHTLRMIGENSGLVSYMREKAVSPNCWNVIIHYSG
FLHLELLSSYDVDVNIINTISEWIVLIKTRGVRRPEFQTLLTESESEHGERVNGRCLNNWLRGKTLKL
IFSLRKEMEAFLVSVGATTVHFSDKQWLCDFGLVDIMEHLRELSEELRVSKVFAAAAFDHICTFEVKLN
LFQRHIEEKNLTDFPALREVVDELKQONKEDEKIFDPDRYQMVICRLQKEFERHFKDLRFIKKDLELFSN
PFNFKPEYAPISVRVELTKLQANTNLWNEYRIKDLGQFYAGLSAESYPIIKGVACKVASLFDSNQICEKA
FSYLTRNQHTLSQPLTDEHLQALFRVATTEMEPGWDDLVRERNESNP

TRTRPLEQKLISEEDLAANDILDYKDDDDKV

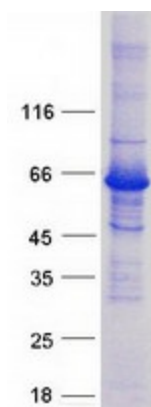
Tag:	C-Myc/DDK
Purity:	> 80% as determined by SDS-PAGE and Coomassie blue staining
Concentration:	>0.05 µg/µL as determined by microplate BCA method
Labeling Method:	Labeled with [U- ¹³ C ₆ , ¹⁵ N ₄]-L-Arginine and [U- ¹³ C ₆ , ¹⁵ N ₂]-L-Lysine
Buffer:	25 mM Tris-HCl, 100 mM glycine, pH 7.3
Storage:	Store at -80°C. Avoid repeated freeze-thaw cycles.
Stability:	Stable for 3 months from receipt of products under proper storage and handling conditions.
RefSeq:	NP_055620
RefSeq Size:	7439
RefSeq ORF:	1821



[View online »](#)

Locus ID:	9852
UniProt ID:	Q7L775
Cytogenetics:	3p22.2
Summary:	The EPM2A gene, which encodes laforin, is mutated in an autosomal recessive form of adolescent progressive myoclonus epilepsy. The protein encoded by this gene binds to laforin, but its function is not known. This gene is intronless. [provided by RefSeq, Oct 2008]

Product images:



Coomassie blue staining of purified EPM2AIP1 protein (Cat# [TP309239]). The protein was produced from HEK293T cells transfected with EPM2AIP1 cDNA clone (Cat# [RC209239]) using MegaTran 2.0 (Cat# [TT210002]).