

Product datasheet for PH309238

AGTPBP1 (NM_015239) Human Mass Spec Standard

Product data:

Product Type:	Mass Spec Standards
Description:	AGTPBP1 MS Standard C13 and N15-labeled recombinant protein (NP_056054)
Species:	Human
Expression Host:	HEK293
Expression cDNA Clone or AA Sequence:	RC209238
Predicted MW:	133.9 kDa
Protein Sequence:	>RC209238 protein sequence Red=Cloning site Green=Tags(s)

MSKLVKVIPEKSLTNSRIVGLLAQLEKINAEPSESDTARYVTSKILHLAQSQEKTRREMTAKGSTGMEIL
LSTLENTKDLQTTLNILSILVELVSAGGRRVFLVTKGGSQILLQLLMNASKESPPHEDLMVQIHSILA
KIGPKDKKFGVKARINGALNITLNLVKQNLQNHRLVLPCLQLLRVYSANSVNSVSLGKNGVVELMFKIIG
PFSKKNSSLIKVALDTLAALLKSKTNARRAVDRGYVQVLLTIYVDWHRHDNRHRNMLIRKILQSLKSVT
NIKLRKAFIDANGMKILYNTSQLPVIPVTPGVAQLYSLPPEVDDVDESDNDIDVEAENETENEDDL
DQNFKNDDIETDINKLKPQQEPGRTIEDLKMYEHLFPELVDDFQDYDLISKEPKPFVFEKVRGPIVVPT
AGEETSGNSGNLRKVVMEKNISSKGDEGEKKSTFMDLAKEDIKNDRTLQQQPGDQNRITSSVHGLNNDI
VKALDRITLQNIQSQTAPGFTAEMKKDCSLPLTVLTCAKACPHMATCGNVLFEGRVTVQLGKLCCTGVETE
DDEDTESNSSVEQASVEVPDGPDLHDPDYIEIVKNTKSVPEYSEVAYPDYFGHIPPPFPKEPILERPYGV
QRTKIAQDIERLIHQSDIIDRVVYDLNPNYTIPEEGDILKFNSKFESGNLRKVIQIRKNEYDLILNSDI
NSNHYHQWFYFEVSGMRPGVAYRFNIINCEKSNSQFNMGQPLMYSVQEALNARPPWIRMGTDICYYKNH
FSRSSVAAGGQKGSYYTITFTVNFPHKDDVCYFAYHYPTYSTLQMLKQKLESANPQQIYFRKDVLC
TLGNSCPLVTITAMPESNYEYHICHFRNRPYVFLSARVHPGETNASWVMKGTLEYLMSNNPTAQLRES
YIFKIVPMLNPDGVINGNHRCSLGGEDLNRQWQSPSPDLHPTIYHAKGLLQYLAAVKRLPLVYCDYHGS
RKKNVFMYGCSIKETVWHTNDNATSCDVVEDTGYRTLKILSHIAPAFCMSSCSFVVEKSKESTARVVVW
REIGVQRSYTMESTLCCGCDQGYKGLQIGTRELEEMGAKFCVGLLRKRLTSPLEYNLPSSLLDFENDLI
ESSCKVTSPTTYVLDEDEPRFLEEVDYSAESNDELIDIELAENVGDYEPSAQEEVLSDELRSRTYLP

TRTRPLEQKLISEEDLAANDILDYKDDDDKV

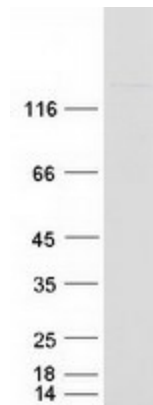
Tag:	C-Myc/DDK
Purity:	> 80% as determined by SDS-PAGE and Coomassie blue staining
Concentration:	>0.05 µg/µL as determined by microplate BCA method
Labeling Method:	Labeled with [U- ¹³ C ₆ , ¹⁵ N ₄]-L-Arginine and [U- ¹³ C ₆ , ¹⁵ N ₂]-L-Lysine
Buffer:	25 mM Tris-HCl, 100 mM glycine, pH 7.3



[View online »](#)

Storage:	Store at -80°C. Avoid repeated freeze-thaw cycles.
Stability:	Stable for 3 months from receipt of products under proper storage and handling conditions.
RefSeq:	NP_056054
RefSeq Size:	4436
RefSeq ORF:	3558
Synonyms:	CCP1; CONDCA; NNA1
Locus ID:	23287
UniProt ID:	Q9UPW5 , A0A024R288
Cytogenetics:	9q21.33
Summary:	NNA1 is a zinc carboxypeptidase that contains nuclear localization signals and an ATP/GTP-binding motif that was initially cloned from regenerating spinal cord neurons of the mouse. [supplied by OMIM, Jul 2002]
Protein Families:	Protease

Product images:



Coomassie blue staining of purified AGTPBP1 protein (Cat# [TP309238]). The protein was produced from HEK293T cells transfected with AGTPBP1 cDNA clone (Cat# [RC209238]) using MegaTran 2.0 (Cat# [TT210002]).