

Product datasheet for PH309220

C6orf97 (CCDC170) (NM_025059) Human Mass Spec Standard

Product data:

Product Type:	Mass Spec Standards
Description:	C6orf97 MS Standard C13 and N15-labeled recombinant protein (NP_079335)
Species:	Human
Expression Host:	HEK293
Expression cDNA Clone or AA Sequence:	RC209220
Predicted MW:	82.3 kDa
Protein Sequence:	>RC209220 protein sequence Red=Cloning site Green=Tags(s)

MSLDCTSHIALGAASPAPEETYDHLSEVPVTREQLNHYRNVAQNARSEL AATLVKFECAQSELQDLRSKM
LSKEVSCQELKAEMESYKENNARKSSLLTSLRDRVQEELEESAALSTSKIRTEITAHAAIKENQELKKKV
VELNEKLQKCSKENEENKQVSKNCRKHEEFLTQLRDCLDPDERNDKASDEDLILKLRDLRKENEFVKGQ
IVILEETINVHEMEAKASRETIMRLASEVNRQKKAASCTEEKEKLNQDLLSAVEAKEALEREVKIFQER
LLAGQQVWDASKQEVSLKSSSELEKSLKASQDAVTTSSQSQYFSFREKITALLRGRLSMTGSTEDTILE
KIREMDSREESRDRMVSQLAQISELVEQLGKESGFHQKALQRAQKAENMLETLQGQLTHLEAELVSGGV
LRDNLNFEKQKYLKFLDQLSQKMKLDQMAAELGDFMRLDVVLARTEQLVRLESNAVIENKTI AHNLRKRL
KTQKERLESKELHMSLLRQKIAQLEEEKQARTALVVERDNAHLTIRNLQKKVERLQKELNTRCDLHTELK
AKLADTNELKIKTLEQTKAIEDLNKSRDQLEKMKEKAEEKLMSVKSELDTTEHEAKENKERARNMIEVVT
SEMKTLLKKSLEEA EKREKQLADRFREVVSQMLGLNVTSLALPDYEI IKCLERLIHSHQHFFVTCACLKDV
TGQERHPQGHLLH

TRTRPLEQKLI SEEDLAANDILDYKDDDDKV

Tag:	C-Myc/DDK
Purity:	> 80% as determined by SDS-PAGE and Coomassie blue staining
Concentration:	>0.05 µg/µL as determined by microplate BCA method
Labeling Method:	Labeled with [U- 13C6, 15N4]-L-Arginine and [U- 13C6, 15N2]-L-Lysine
Buffer:	25 mM Tris-HCl, 100 mM glycine, pH 7.3
Storage:	Store at -80°C. Avoid repeated freeze-thaw cycles.
Stability:	Stable for 3 months from receipt of products under proper storage and handling conditions.
RefSeq:	NP_079335



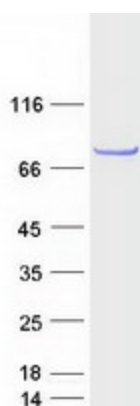
[View online »](#)

RefSeq Size:	5283
RefSeq ORF:	2145
Synonyms:	bA282P11.1; C6orf97
Locus ID:	80129
UniProt ID:	Q8IYT3
Cytogenetics:	6q25.1

Summary: The function of this gene and its encoded protein is not known. Several genome-wide association studies have implicated the region around this gene to be involved in breast cancer and bone mineral density, but no link to this specific gene has been found. [provided by RefSeq, May 2010]

Protein Families: Druggable Genome

Product images:



Coomassie blue staining of purified CCDC170 protein (Cat# [TP309220]). The protein was produced from HEK293T cells transfected with CCDC170 cDNA clone (Cat# [RC209220]) using MegaTran 2.0 (Cat# [TT210002]).