

Product datasheet for PH309219

TRIB1 (NM_025195) Human Mass Spec Standard

Product data:

Product Type:	Mass Spec Standards
Description:	TRIB1 MS Standard C13 and N15-labeled recombinant protein (NP_079471)
Species:	Human
Expression Host:	HEK293
Expression cDNA Clone or AA Sequence:	RC209219
Predicted MW:	41 kDa
Protein Sequence:	>RC209219 protein sequence Red=Cloning site Green=Tags(s)

MRVGPVRSAMSGASQPRGPALLFPATRGVPAKRLLDADDAAAVAAKCPRLSECSSPPDYLSPPGSPCSPQ
 PPPAAPGAGGGSGSAPGPSRIADYLLLPLAEREHVSRALCIHTGRELRCKVFPIKHYQDKIRPYIQLPSH
 SNITGIVEVILGETKAYVFFEKDFGDMHSYVRSRKRLEEEAARLFKQIVSAVAHCHQSAIVLGDCLKLRK
 FVFSTEERTQLRLESLEDTHIMKGEDDALSDKHGCPAYVSPEILNTTGTYSGKAADVWSLGVMLYTLVVG
 RYPFHSDPSALFSKIRRGQFCIPEHISPKARCLIRSLLRREPSERLTAPEILLHPWFESVLEPGYIDSE
 IGTSDQIVPEYQEDSDISSFFC

TRTRPLEQKLI SEEDLAANDILDYKDDDDKV

Tag:	C-Myc/DDK
Purity:	> 80% as determined by SDS-PAGE and Coomassie blue staining
Concentration:	>0.05 µg/µL as determined by microplate BCA method
Labeling Method:	Labeled with [U- ¹³ C ₆ , ¹⁵ N ₄]-L-Arginine and [U- ¹³ C ₆ , ¹⁵ N ₂]-L-Lysine
Buffer:	25 mM Tris-HCl, 100 mM glycine, pH 7.3
Storage:	Store at -80°C. Avoid repeated freeze-thaw cycles.
Stability:	Stable for 3 months from receipt of products under proper storage and handling conditions.
RefSeq:	NP_079471
RefSeq Size:	3649
RefSeq ORF:	1116
Synonyms:	C8FW; GIG-2; GIG2; SKIP1; TRB-1; TRB1
Locus ID:	10221



[View online »](#)

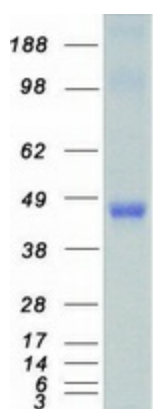
UniProt ID: [Q96RU8](#)

Cytogenetics: 8q24.13

Summary: Adapter protein involved in protein degradation by interacting with COP1 ubiquitin ligase (PubMed:27041596). The COP1-binding motif is masked by autoinhibitory interactions with the protein kinase domain (PubMed:26455797). Serves to alter COP1 substrate specificity by directing the activity of COP1 toward CEBPA (PubMed:27041596). Binds selectively the recognition sequence of CEBPA (PubMed:26455797). Regulates myeloid cell differentiation by altering the expression of CEBPA in a COP1-dependent manner (By similarity). Controls macrophage, eosinophil and neutrophil differentiation via the COP1-binding domain (By similarity). Interacts with MAPK kinases and regulates activation of MAP kinases, but has no kinase activity (PubMed:15299019, PubMed:26455797).[UniProtKB/Swiss-Prot Function]

Protein Families: Druggable Genome, Protein Kinase

Product images:



Coomassie blue staining of purified TRIB1 protein (Cat# [TP309219]). The protein was produced from HEK293T cells transfected with TRIB1 cDNA clone (Cat# [RC209219]) using MegaTran 2.0 (Cat# [TT210002]).