

Product datasheet for PH309201

COLEC12 (NM_130386) Human Mass Spec Standard

Product data:

Product Type:	Mass Spec Standards
Description:	COLEC12 MS Standard C13 and N15-labeled recombinant protein (NP_569057)
Species:	Human
Expression Host:	HEK293
Expression cDNA Clone or AA Sequence:	RC209201
Predicted MW:	81.6 kDa
Protein Sequence:	>RC209201 protein sequence Red=Cloning site Green=Tags(s)

MKDDFAEEEEVQSFYKRFGIQEGTQCTKCKNNWALKFSIILLYILCALLTITVAILGYKVVEKMDNVTG
GMETSRQTYDDKLTAVESDLEKLGDTGKKAISTNSELSTFRSDILDRLRQQLREITEKTSKNKDTLEKLQ
ASGDALVDRQSQLKETLENNSFLITTVNKTLQAYNGYVTNLQQDTSVLQGNLQNMYSHNVVIMNLLNLN
LTQVQQRNLITNLQRSVDDTSQAIQRIKNDFNLQQVFLQAKKDDWLKEKVQSLQTLAANNSALAKANN
DTLEDMNSQLNSFTGQMENITTSQANEQNLKDLQDLHKDAENRTAIKFNQLEERFQLFETDIVNIISNI
SYTAHHLRTLTSNLNEVRTTCTDTLTKHTDDL TSLNNTLANIRLDSVSLRMQQDLMRSRLDTEVANLSVI
MEEMKLVDSKHGQLIKNFITLQPPGPRGPRGDRGSQGGPPTGNKGQKGEKGEPPGPPAGERGPIGPA
GPPGERGGKGSQGGKSGRSGPGKPGQPGSGDPGPPGPPGKEGLPGPQGGPFQGLQGTVGEPGVPG
PRGLPGLPGVPGMPGPKGPPGPPGSGAVVPLALQNEPTAPEDNSCPPHWKNFTDKCYFVSVEKEIFED
AKLFCEDKSSHLVFINTREEQQWIKKQMVGRESHWIGLTD SERENEWKWLDGTS PDYKNWKAGQPDNWWGH
GHGPGEDCAGLIYAGQWDFQCEDVNNFICEKDRETVLSSAL

TRTRPLEQKLISEEDLAANDILDYKDDDDKV

Tag:	C-Myc/DDK
Purity:	> 80% as determined by SDS-PAGE and Coomassie blue staining
Concentration:	>0.05 µg/µL as determined by microplate BCA method
Labeling Method:	Labeled with [U- 13C6, 15N4]-L-Arginine and [U- 13C6, 15N2]-L-Lysine
Buffer:	25 mM Tris-HCl, 100 mM glycine, pH 7.3
Storage:	Store at -80°C. Avoid repeated freeze-thaw cycles.
Stability:	Stable for 3 months from receipt of products under proper storage and handling conditions.
RefSeq:	<u>NP_569057</u>



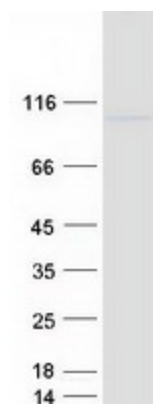
[View online »](#)

RefSeq Size:	3134
RefSeq ORF:	2226
Synonyms:	CLP1; NSR2; SCARA4; SRCL
Locus ID:	81035
UniProt ID:	Q5KU26
Cytogenetics:	18p11.32

Summary: This gene encodes a member of the C-lectin family, proteins that possess collagen-like sequences and carbohydrate recognition domains. This protein is a scavenger receptor that displays several functions associated with host defense. It can bind to carbohydrate antigens on microorganisms, facilitating their recognition and removal. It also mediates the recognition, internalization, and degradation of oxidatively modified low density lipoprotein by vascular endothelial cells. [provided by RefSeq, May 2018]

Protein Families: Transmembrane

Product images:



Coomassie blue staining of purified COLEC12 protein (Cat# [TP309201]). The protein was produced from HEK293T cells transfected with COLEC12 cDNA clone (Cat# [RC209201]) using MegaTran 2.0 (Cat# [TT210002]).