

Product datasheet for PH309191

Eph receptor A3 (EPHA3) (NM_005233) Human Mass Spec Standard

Product data:

Product Type:	Mass Spec Standards
Description:	EPHA3 MS Standard C13 and N15-labeled recombinant protein (NP_005224)
Species:	Human
Expression Host:	HEK293
Expression cDNA Clone or AA Sequence:	RC209191
Predicted MW:	110 kDa
Protein Sequence:	>RC209191 representing NM_005233 Red=Cloning site Green=Tags(s)

MDCQLSILLLLSCSVLDSFGELIPQPSNEVNLDSKTIQGELGWI SYPSHGWEIISGVDEHYTPIRTYQV
CNVMDHSQNNWLR TNWVPRNSAQKIYVELKFTLRDCNSIPLVLGTCKETFNLYYMESDDDHGKFKREHQF
TKIDTIAADESFTQMDLGDRIKLNTEIREVGPVNKKGFYLAQDVGACVALVSVRVYFKKCPFTVKNLA
MFPDTPMDSQSLVEVRGSCVNNSKEEDPPRMYCSTEGEWLVPIGKCSNAGYEERGFMCQACRPGFYKA
LDGNMCKCAKPPHSSTQEDGSMNCRCENNYFRADKPPSMACTRPPSSPRNVISINETSIVILDWSWPLD
TGGRKDVTFNII CKKCGWNIKQCEPCSPNVRFLPRQFGLTNTT VTDLLAHTNYTFEIDAVNGVSELSS
PPRQFAAVSITTNQAAPSPVLTIKKDRTSRNSISLSWQEPEHPNGIILDYEVKYYEKQEQETS YLILRAR
GTNVTISSLPD TIYVFQIRART AAGYGTNSRKF EFETSPDSF S ISGESSQVVMIAISA AVAIILLTVVI
YVLIGRFCGYKSKHGADEKRLHFNGHLKLPGLR TYVDPHTYEDPTQTVHEFAKELDATNISIDKVVGAG
EFGVCSGRLKLP SKKEISVAIKTLKVGYTEKQRRDFLGEASIMGQFDHPNII RLEGVVTKSKPVMIVTE
YMENGLSDFS LRKHDAQFTVIQLVGM LRGIASGMKYLSDMGYVHRDLAARNILINSNLVCKVSDFGLSRV
LEDDPEAAAYTTRGGKIPIRWTSPEA IAYRKFTSASDVWSYGIVLWEVMSYGERPYWEMSNQDVIKAVDEG
YRLPPPMDCPAALYQLMLDCWQKDRNNRPKFEQIVSILDKLIRNPGSLKIITSAARP SNLLLDQSNVDI
TFRTTGDWLN GVWTAHCKEIFTGVEYSSCDTIAKISTDDMKKVGVTVVG PQKKI ISSIKALETQSKNGP
VPV

TRTRPLEQKLI SEEDLAANDILDYKDDDDKV

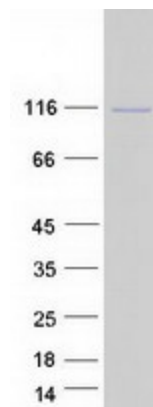
Tag:	C-Myc/DDK
Purity:	> 80% as determined by SDS-PAGE and Coomassie blue staining
Concentration:	>0.05 µg/µL as determined by microplate BCA method
Labeling Method:	Labeled with [U- ¹³ C ₆ , ¹⁵ N ₄]-L-Arginine and [U- ¹³ C ₆ , ¹⁵ N ₂]-L-Lysine
Buffer:	25 mM Tris-HCl, 100 mM glycine, pH 7.3
Storage:	Store at -80°C. Avoid repeated freeze-thaw cycles.



[View online »](#)

Stability:	Stable for 3 months from receipt of products under proper storage and handling conditions.
RefSeq:	NP_005224
RefSeq Size:	5826
RefSeq ORF:	2949
Synonyms:	EK4; ETK; ETK1; HEK; HEK4; TYRO4
Locus ID:	2042
UniProt ID:	P29320 , A0A140VJJ0 , Q6P4R6
Cytogenetics:	3p11.1
Summary:	This gene belongs to the ephrin receptor subfamily of the protein-tyrosine kinase family. EPH and EPH-related receptors have been implicated in mediating developmental events, particularly in the nervous system. Receptors in the EPH subfamily typically have a single kinase domain and an extracellular region containing a Cys-rich domain and 2 fibronectin type III repeats. The ephrin receptors are divided into 2 groups based on the similarity of their extracellular domain sequences and their affinities for binding ephrin-A and ephrin-B ligands. This gene encodes a protein that binds ephrin-A ligands. Two alternatively spliced transcript variants have been described for this gene. [provided by RefSeq, Jul 2008]
Protein Families:	Druggable Genome, Protein Kinase, Secreted Protein, Transmembrane
Protein Pathways:	Axon guidance

Product images:



Coomassie blue staining of purified EPHA3 protein (Cat# [TP309191]). The protein was produced from HEK293T cells transfected with EPHA3 cDNA clone (Cat# [RC209191]) using MegaTran 2.0 (Cat# [TT210002]).