

## Product datasheet for PH309162

### MTRFR (NM\_152269) Human Mass Spec Standard

#### Product data:

Product Type:	Mass Spec Standards
Description:	C12orf65 MS Standard C13 and N15-labeled recombinant protein (NP_689482)
Species:	Human
Expression Host:	HEK293
Expression cDNA Clone or AA Sequence:	RC209162
Predicted MW:	18.8 kDa
Protein Sequence:	>RC209162 protein sequence Red=Cloning site Green=Tags(s)  MSTVGLFHFPPLTRICPAPWGLRLWEKLTLLSPGIAVTPVQMAGKKDYPALLSLDENELEEQFVKGHGP GGQATNKTSNCVVLKHIPSGIVVKCHQTRSVDQNRKLRKILQEKVDVFYNGENSPVHKEKREAAKKKQE RKKRAKETLEKKLLKELWESSKKVH  TRTRPLEQKLISEEDLAANDILDYKDDDDKV
Tag:	C-Myc/DDK
Purity:	> 80% as determined by SDS-PAGE and Coomassie blue staining
Concentration:	>0.05 µg/µL as determined by microplate BCA method
Labeling Method:	Labeled with [U- <sup>13</sup> C <sub>6</sub> , <sup>15</sup> N <sub>4</sub> ]-L-Arginine and [U- <sup>13</sup> C <sub>6</sub> , <sup>15</sup> N <sub>2</sub> ]-L-Lysine
Buffer:	25 mM Tris-HCl, 100 mM glycine, pH 7.3
Storage:	Store at -80°C. Avoid repeated freeze-thaw cycles.
Stability:	Stable for 3 months from receipt of products under proper storage and handling conditions.
RefSeq:	<a href="#">NP_689482</a>
RefSeq Size:	1692
RefSeq ORF:	498
Synonyms:	C12orf65; COXPD7; SPG55
Locus ID:	91574
UniProt ID:	<a href="#">Q9H3J6</a>

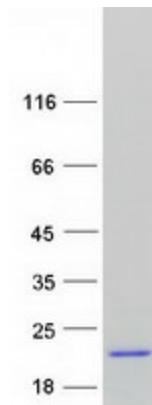


[View online »](#)

Cytogenetics: 12q24.31

**Summary:** This nuclear gene encodes a mitochondrial matrix protein that appears to contribute to peptide chain termination in the mitochondrial translation machinery. Two different 1 bp deletions (resulting in the same premature stop codon) result in decreased mitochondrial translation, decreased levels of oxidative phosphorylation complexes and encephalomyopathy. Alternative splicing results in multiple transcript variants. [provided by RefSeq, Aug 2010]

**Product images:**



Coomassie blue staining of purified C12orf65 protein (Cat# [TP309162]). The protein was produced from HEK293T cells transfected with C12orf65 cDNA clone (Cat# [RC209162]) using MegaTran 2.0 (Cat# [TT210002]).