

Product datasheet for PH309159

RAB43 (NM_198490) Human Mass Spec Standard

Product data:

Product Type:	Mass Spec Standards
Description:	RAB43 MS Standard C13 and N15-labeled recombinant protein (NP_940892)
Species:	Human
Expression Host:	HEK293
Expression cDNA Clone or AA Sequence:	RC209159
Predicted MW:	23.3 kDa
Protein Sequence:	>RC209159 protein sequence Red=Cloning site Green=Tags(s) MAGPGPGGDPDEQYDFLFLKLVLVGDASVGKTCVVQRFKGTGAFSERQGSTIGVDFTMKTLIEIQGKRVKIQ IWDTAGQERFRTITQSYYSANGAILAYDITKRSSFLSVPHWIEDVRKYAGSNIVQLLIGNKSDLSELRE VSLAEAQSLAEHYDILCAIETSADSSNVVEAFLRVATELIMRHGGPLFSEKSPDHIQLNSKDIGEGWGC GC TRTRPLEQKLISEEDLAANDILDYKDDDDKV
Tag:	C-Myc/DDK
Purity:	> 80% as determined by SDS-PAGE and Coomassie blue staining
Concentration:	>0.05 µg/µL as determined by microplate BCA method
Labeling Method:	Labeled with [U- ¹³ C ₆ , ¹⁵ N ₄]-L-Arginine and [U- ¹³ C ₆ , ¹⁵ N ₂]-L-Lysine
Buffer:	25 mM Tris-HCl, 100 mM glycine, pH 7.3
Storage:	Store at -80°C. Avoid repeated freeze-thaw cycles.
Stability:	Stable for 3 months from receipt of products under proper storage and handling conditions.
RefSeq:	NP_940892
RefSeq Size:	4498
RefSeq ORF:	636
Synonyms:	RAB11B; RAB41
Locus ID:	339122
UniProt ID:	Q86YS6



[View online »](#)

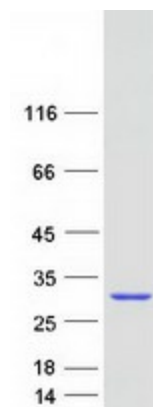
Cytogenetics: 3q21.3

Summary:

The small GTPases Rab are key regulators of intracellular membrane trafficking, from the formation of transport vesicles to their fusion with membranes. Rabs cycle between an inactive GDP-bound form and an active GTP-bound form that is able to recruit to membranes different set of downstream effectors directly responsible for vesicle formation, movement, tethering and fusion. The low intrinsic GTPase activity of RAB43 is activated by USP6NL. Involved in retrograde transport from the endocytic pathway to the Golgi apparatus. Involved in the transport of Shiga toxin from early and recycling endosomes to the trans-Golgi network. Required for the structural integrity of the Golgi complex. Plays a role in the maturation of phagosomes that engulf pathogens, such as *S.aureus* and *M.tuberculosis*. [UniProtKB/Swiss-Prot Function]

Protein Families: Druggable Genome

Product images:



Coomassie blue staining of purified RAB43 protein (Cat# [TP309159]). The protein was produced from HEK293T cells transfected with RAB43 cDNA clone (Cat# [RC209159]) using MegaTran 2.0 (Cat# [TT210002]).