

Product datasheet for PH309147

CSN1 (GPS1) (NM_212492) Human Mass Spec Standard

Product data:

Product Type:	Mass Spec Standards
Description:	GPS1 MS Standard C13 and N15-labeled recombinant protein (NP_997657)
Species:	Human
Expression Host:	HEK293
Expression cDNA Clone or AA Sequence:	RC209147
Predicted MW:	59.1 kDa
Protein Sequence:	>RC209147 protein sequence Red=Cloning site Green=Tags(s)

MRDSSAPSSASSSVTDLYCTPHSSRSDLVLPGTAGDFSLASLSACTLLYEGAVEPMQIDVDPQEDPQNA
PDVNYVVENPSLDLEQYAASYSGLMRIERLQFIADHCPTLRVEALKMALSFVQRTFNVDMYEEIHRKLSE
ATRELQNAPDAIPESGVEPPALDTAWVEATRKKALLKLEKLDLTKNYKNSIKESIRRGHDDLGDHYLD
CGDLSNALKCYSRARDYCTSAKHVINMCLNVIKVSVYLNWSHVL SYVSKAESTPEIAEQRGERDSQTQA
ILTKLKCAAGLAELAARKYKQAAKCLLLASFDHCFPELLSPSNVAIYGGLCALATFDRQELQRNVISSS
SFKLFLELEPQVRDIIFKFYESKYASCLKMLDEMKNLLLDMYLAPHVRTLYTQIRNRALIQYFSPYVSA
DMHRMAAAFNTTVALEDEL TQLILEGLISARVDSHSKILYARDVDQRSTTFEKSLLMGKEFQRRAKAMM
LRAAVLRNQIHVKSPPREGSQGELTPANSQSRMSTNM

TRTRPLEQKLI SEEDLAANDILDYKDDDDKV

Tag:	C-Myc/DDK
Purity:	> 80% as determined by SDS-PAGE and Coomassie blue staining
Concentration:	>0.05 µg/µL as determined by microplate BCA method
Labeling Method:	Labeled with [U- ¹³ C ₆ , ¹⁵ N ₄]-L-Arginine and [U- ¹³ C ₆ , ¹⁵ N ₂]-L-Lysine
Buffer:	25 mM Tris-HCl, 100 mM glycine, pH 7.3
Storage:	Store at -80°C. Avoid repeated freeze-thaw cycles.
Stability:	Stable for 3 months from receipt of products under proper storage and handling conditions.
RefSeq:	NP_997657
RefSeq Size:	2363
RefSeq ORF:	1581



[View online »](#)

Synonyms: COPS1; CSN1; SGN1

Locus ID: 2873

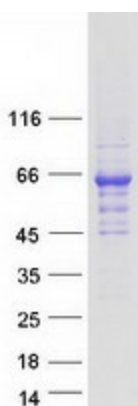
UniProt ID: [Q13098](#)

Cytogenetics: 17q25.3

Summary: This gene is known to suppress G-protein and mitogen-activated signal transduction in mammalian cells. The encoded protein shares significant similarity with Arabidopsis FUS6, which is a regulator of light-mediated signal transduction in plant cells. [provided by RefSeq, Mar 2016]

Protein Families: Druggable Genome

Product images:



Coomassie blue staining of purified GPS1 protein (Cat# [TP309147]). The protein was produced from HEK293T cells transfected with GPS1 cDNA clone (Cat# [RC209147]) using MegaTran 2.0 (Cat# [TT210002]).