

## Product datasheet for PH309139

### SOX4 (NM\_003107) Human Mass Spec Standard

#### Product data:

Product Type:	Mass Spec Standards
Description:	SOX4 MS Standard C13 and N15-labeled recombinant protein (NP_003098)
Species:	Human
Expression Host:	HEK293
Expression cDNA Clone or AA Sequence:	RC209139
Predicted MW:	47.3 kDa
Protein Sequence:	>RC209139 protein sequence Red=Cloning site Green=Tags(s)

MVQQTNNAENTEALLAGESSDSGAGLELGIASSPTPGSTASTGGKADDPWCKTPSGHIKRPMAFMVWS  
QIERRKIMEQSPDMHNAEISKRLGKRWLLKDSKIPFIREAERLRLKHMADYPDYKYRPRKKVKSGNAN  
SSSSAAASSKPGEKGDYVGGSGGGHGGGGSSNAGGGGGASGGGANSKPAQKSCGSKVAGGAGGG  
VSKPHAKLILAGGGGGKAAAAAASFQAGAAALLPLGAAADHHSLYKARTPSASASASSASASAA  
LAAPGKHLAEKKVKRVYLFGLGTSSSPVGGVAGADPSDPLGLYEEGAGCSPDAPSLSGRSSAASSPA  
AGRSPADHRGYASLRAASPAPSSAPSHASSASSHSSSSSSGSSSSDDEFEDLLDLNPSSNFESMSLG  
SFSSSSALDRDLDFNFEPGSGSHFEPDYCTPEVSEMISSGDWLESSISNLVFTY

SGPTRTRPLEQKLISEEDLAANDILDYKDDDDKV

Tag:	C-Myc/DDK
Purity:	> 80% as determined by SDS-PAGE and Coomassie blue staining
Concentration:	>0.05 µg/µL as determined by microplate BCA method
Labeling Method:	Labeled with [U- <sup>13</sup> C <sub>6</sub> , <sup>15</sup> N <sub>4</sub> ]-L-Arginine and [U- <sup>13</sup> C <sub>6</sub> , <sup>15</sup> N <sub>2</sub> ]-L-Lysine
Buffer:	25 mM Tris-HCl, 100 mM glycine, pH 7.3
Storage:	Store at -80°C. Avoid repeated freeze-thaw cycles.
Stability:	Stable for 3 months from receipt of products under proper storage and handling conditions.
RefSeq:	<u>NP_003098</u>
RefSeq Size:	4912
RefSeq ORF:	1422
Synonyms:	CSS10; EV116



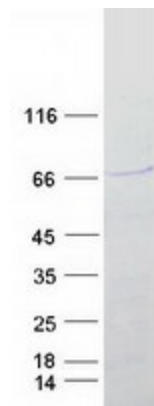
[View online »](#)

Locus ID: 6659  
UniProt ID: [Q06945](#)  
Cytogenetics: 6p22.3

**Summary:** This intronless gene encodes a member of the SOX (SRY-related HMG-box) family of transcription factors involved in the regulation of embryonic development and in the determination of the cell fate. The encoded protein may act as a transcriptional regulator after forming a protein complex with other proteins, such as syndecan binding protein (syntenin). The protein may function in the apoptosis pathway leading to cell death as well as to tumorigenesis and may mediate downstream effects of parathyroid hormone (PTH) and PTH-related protein (PTHrP) in bone development. The solution structure has been resolved for the HMG-box of a similar mouse protein. [provided by RefSeq, Jul 2008]

**Protein Families:** Druggable Genome, ES Cell Differentiation/IPS, Induced pluripotent stem cells, Stem cell relevant signaling - TGFb/BMP signaling pathway, Transcription Factors

### Product images:



Coomassie blue staining of purified SOX4 protein (Cat# [TP309139]). The protein was produced from HEK293T cells transfected with SOX4 cDNA clone (Cat# [RC209139]) using MegaTran 2.0 (Cat# [TT210002]).