

Product datasheet for PH309138

CAF1 (CHAF1A) (NM_005483) Human Mass Spec Standard

Product data:

Product Type:	Mass Spec Standards
Description:	CHAF1A MS Standard C13 and N15-labeled recombinant protein (NP_005474)
Species:	Human
Expression Host:	HEK293
Expression cDNA Clone or AA Sequence:	RC209138
Predicted MW:	106.9 kDa
Protein Sequence:	>RC209138 protein sequence Red=Cloning site Green=Tags(s)

MLEEECGAPGARGAATAMDCKDRPAFPVKKLIQARLPFKRLNLVPGKADDMSDDQGTSVQSKSPDLEA
SLDTLENNCHVGSIDIFRPKLVNGKGPLDNFLRNRIETSIGQSTVIIDLTEDSNEQPDSDLVDHKNLNSEA
SPSREAIHQREDTGDQQGLLKAIQNDKLAFPGETLSDIPCKTEEEGVGCGGAGRRGDSQECSPRSCPEL
TSGPRMCPRKEQDSWSEAGGILFKGKVPVVLDILAVRPPQIKSLPATPQGKNMTPSEVLESFPEEDS
VLSHSSLSSPSTSSPEGPPAPPKQHSSTSPFPTSTPLRRITKKFVKGSTTEKNLRLQRDQERLQKQLKL
RAEREEKEKLEAKRAKEEAKKKKEEKELKEKERREKREKDEKEKAQRLKEERRKERQEALEAKLE
EKRRKEEEKRLREEEKRIKAEAEITRFFQKPKTPQAPKTLAGSCGKFAPFEIKEHMLAPRRRTAFHPD
LCSQLDQLLQQQSGEFSFLKDLKGRQPLRSGPTHVSTRNADIFNSDVVI VERGKGDGVPERRKFGRMKLL
QFCENHRPAYWGTWNKKTALIRARDPWAQDTKLLDYEVDSEEWEEEPGESLSHSEGDDDDDMGEDEDE
DDGFFVPHGYLSEDEGVTEECADPENHKVQRKLAKEWDEFLAKGKRFRVLQPVKIGCVWAADRDCAGDD
LKVLQQFAACFLETLPAQEEQTPKASKRERRDEQILAQLLPLHGNVNGSKVIIREFQEHCRRGLLSNHT
GSPRSPSTTYLHTPTSEDAAIPSKSRLKRLISENSVYEKRPDFRMCWYVHPQVLQSFQQEHLVPCQWS
YVTSVPSAPKEDSGSVSTGPSQGTPI SLKRKSAGSMCITQFMKKRRHDGQIGAEDMDGFGADTEEEEEEE
EGDCMIVDVPDAAEVQAPCGAASGAGGGVGVDTGKATLTASPLGAS

TRTRPLEQKLI SEEDLAANDILDYKDDDDKV

Tag:	C-Myc/DDK
Purity:	> 80% as determined by SDS-PAGE and Coomassie blue staining
Concentration:	>0.05 µg/µL as determined by microplate BCA method
Labeling Method:	Labeled with [U- ¹³ C ₆ , ¹⁵ N ₄]-L-Arginine and [U- ¹³ C ₆ , ¹⁵ N ₂]-L-Lysine
Buffer:	25 mM Tris-HCl, 100 mM glycine, pH 7.3
Storage:	Store at -80°C. Avoid repeated freeze-thaw cycles.
Stability:	Stable for 3 months from receipt of products under proper storage and handling conditions.



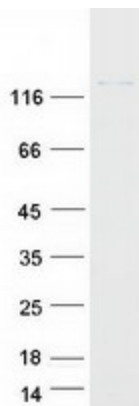
[View online »](#)

RefSeq: [NP_005474](#)
RefSeq Size: 3344
RefSeq ORF: 2868
Synonyms: CAF-1; CAF1; CAF1B; CAF1P150; P150
Locus ID: 10036
UniProt ID: [Q13111](#)
Cytogenetics: 19p13.3

Summary: Chromatin assembly factor I (CAF1) is a nuclear complex consisting of p50, p60 (CHAF1B; MIM 601245), and p150 (CHAF1A) subunits that assembles histone octamers onto replicating DNA in vitro (Kaufman et al., 1995 [PubMed 7600578]).[supplied by OMIM, Mar 2008]

Protein Families: Stem cell - Pluripotency, Transcription Factors

Product images:



Coomassie blue staining of purified CHAF1A protein (Cat# [TP309138]). The protein was produced from HEK293T cells transfected with CHAF1A cDNA clone (Cat# [RC209138]) using MegaTran 2.0 (Cat# [TT210002]).