

## Product datasheet for PH309135

### SERGEF (NM\_012139) Human Mass Spec Standard

#### Product data:

Product Type:	Mass Spec Standards
Description:	SERGEF MS Standard C13 and N15-labeled recombinant protein (NP_036271)
Species:	Human
Expression Host:	HEK293
Expression cDNA Clone or AA Sequence:	RC209135
Predicted MW:	49 kDa
Protein Sequence:	>RC209135 protein sequence Red=Cloning site Green=Tags(s)

MEREPSASEAAPAAAALFAWGANSYQLGLGHKEDVLLPQQLNDFCKPRSVRRITGGGGHSAVVTGGDL  
FVCGLNKDGQLGLGHTEIPYFTPKSLFGCPIQQVACGWDFTIMLTENGQVLSGGSNSFGQLGVPHGPR  
RCVVPQAIELHKEKVVCIAAGLRHAVAATASGIVFQWGTGLASCGRRRLCPGQTLPLFFTAKEPSRVTGLE  
NSKAMCVLAGSDHSASLTDAGEVYVWGSNKHGQLANEAFLPVPQKIEAHCFQNEKVTAIWSGWTHLVAQ  
TETGKMTWGRADYQLGRKLETYEGWKLEKQDSFLPCSRPPNSMPSSPHCLTGATEVSCGSEHNLAIIIG  
GVCYSWGWNEHGMCGDGTANVWAPKPVQALLSSSGLLVGCGAGHSLALCQLPAHPALVQDPKVTYLSPD  
AIEDTESQKAMDKERNWKERQSETSTQSQSDWSRNGGL

TRTRPLEQKLI SEEDLAANDILDYKDDDDKV

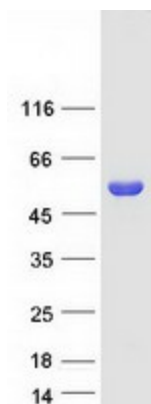
Tag:	C-Myc/DDK
Purity:	> 80% as determined by SDS-PAGE and Coomassie blue staining
Concentration:	>0.05 µg/µL as determined by microplate BCA method
Labeling Method:	Labeled with [U- <sup>13</sup> C <sub>6</sub> , <sup>15</sup> N <sub>4</sub> ]-L-Arginine and [U- <sup>13</sup> C <sub>6</sub> , <sup>15</sup> N <sub>2</sub> ]-L-Lysine
Buffer:	25 mM Tris-HCl, 100 mM glycine, pH 7.3
Storage:	Store at -80°C. Avoid repeated freeze-thaw cycles.
Stability:	Stable for 3 months from receipt of products under proper storage and handling conditions.
RefSeq:	<u><a href="#">NP_036271</a></u>
RefSeq Size:	1582
RefSeq ORF:	1374
Synonyms:	DELGEF; Gnefr



[View online »](#)

Locus ID:	26297
UniProt ID:	<a href="#">Q9UGK8</a> , <a href="#">A8K8C1</a>
Cytogenetics:	11p15.1
Summary:	Probable guanine nucleotide exchange factor (GEF), which may be involved in the secretion process.[UniProtKB/Swiss-Prot Function]

### Product images:



Coomassie blue staining of purified SERGEF protein (Cat# [TP309135]). The protein was produced from HEK293T cells transfected with SERGEF cDNA clone (Cat# [RC209135]) using MegaTran 2.0 (Cat# [TT210002]).