

## Product datasheet for PH309131

### RBM35A (ESRP1) (NM\_017697) Human Mass Spec Standard

#### Product data:

Product Type:	Mass Spec Standards
Description:	ESRP1 MS Standard C13 and N15-labeled recombinant protein (NP_060167)
Species:	Human
Expression Host:	HEK293
Expression cDNA Clone or AA Sequence:	RC209131
Predicted MW:	75.6 kDa
Protein Sequence:	>RC209131 protein sequence Red=Cloning site Green=Tags(s)

MTASPDYLVVLFGITAGATGAKLGSDEKELILLFWKVVDLANKKVGQLHEVLVRPDQLELTEDCKEETKI  
DVESLSSASQLDQALRQFNQSVSNELNIGVTSFCLCTDQQLHVRQILHPEASKKNVLLPECFYSFFDLR  
KEFKKCCPGSPDIDKLDVATMTEYLNFEKSSSVSRYGASQVEDMGNIILAMISEPYNHRFSDPERVNYKF  
ESGTCSEKELIDDNTVVRARGLPWQSSDQDIARFFKGLNIAKGGAAALCLNAQRRNGEALVRFVSEEHRD  
LALQRHKHMGTRYIEVYKATGEDFLKIAGGTSNEVAQFLSKENQVIVMRGLPFTATAEEVVAFFGQHC  
PITGGKEGILFVTYPDGRPTGDAFVLFACEEYAQNALRKHKDLLGKRYIELFRSTAAEVQVLRNRFSSAP  
LIPLPTPPIIPVLPQQFVPPTNVRDCIRLRGLPYAATIEDILDFLGEFATDIRTHGVHMLNMQGRPSGD  
AFIQMSADRAFMAAQCHKKNMKDRYVEVFQCSAEEMNFVLMGGTLNRNGLSPPPCPKLPCLSPPSYTFP  
APAAVIPTEAAIYQPSVILNPRALQPSTAYYPAGTQLFMNYTAYYSPPGSPNSLGYFPTAANLSGVPPQ  
PGTVVRMQGLAYNTGVKEILNFFQGYQYATEDGLIHTNDQARTLPKEWVCI

TRTRPLEQKLISEEDLAANDILDYKDDDDKV

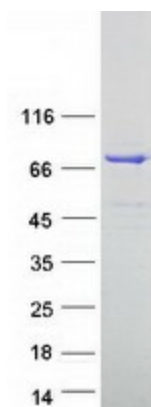
Tag:	C-Myc/DDK
Purity:	> 80% as determined by SDS-PAGE and Coomassie blue staining
Concentration:	>0.05 µg/µL as determined by microplate BCA method
Labeling Method:	Labeled with [U- 13C6, 15N4]-L-Arginine and [U- 13C6, 15N2]-L-Lysine
Buffer:	25 mM Tris-HCl, 100 mM glycine, pH 7.3
Storage:	Store at -80°C. Avoid repeated freeze-thaw cycles.
Stability:	Stable for 3 months from receipt of products under proper storage and handling conditions.
RefSeq:	<a href="#">NP_060167</a>
RefSeq Size:	3806



[View online »](#)

RefSeq ORF:	2043
Synonyms:	DFNB109; RBM35A; RMB35A
Locus ID:	54845
UniProt ID:	<a href="#">Q6NXG1</a>
Cytogenetics:	8q22.1
Summary:	ESRP1 is an epithelial cell-type-specific splicing regulator (Warzecha et al., 2009 [PubMed 19285943]).[supplied by OMIM, Aug 2009]

### Product images:



Coomassie blue staining of purified ESRP1 protein (Cat# [TP309131]). The protein was produced from HEK293T cells transfected with ESRP1 cDNA clone (Cat# [RC209131]) using MegaTran 2.0 (Cat# [TT210002]).