

Product datasheet for PH309127

FOXL2 (NM_023067) Human Mass Spec Standard

Product data:

Product Type:	Mass Spec Standards
Description:	FOXL2 MS Standard C13 and N15-labeled recombinant protein (NP_075555)
Species:	Human
Expression Host:	HEK293
Expression cDNA Clone or AA Sequence:	RC209127
Predicted MW:	38.6 kDa
Protein Sequence:	>RC209127 representing NM_023067 Red=Cloning site Green=Tags(s)

MMASYPEPEDAAGALLAPETGRTVKEPEGPPSPGKGGGGGGTAEKPDPAQKPPYSYVALIAMAIRES
AEKRLTLSGIYQYIIAKFPFYEKNNKGWQNSIRHNLSLNECFIKVPREGGERKGNWTLDPACEDMFEK
GNYRRRRMRKRPFRPPPAHFQPGKGLFGAGGAAGGCGVAGAGADGYGLAPPKYLQSGFLNNSWPLPQPP
SPMPYASCQMAAAAAAAAAAAAAAAAAAGPGSPGAAAVVKLAGPAASYGPYTRVQSMALPPGVNSYNGLGPP
PAAPPPPHPHPHAHHLHAAAAPPPAPPHGAAAPPPGQLSPASPATAAPPAPAPTAPGLQFACARQ
PELAMMHCSYWDHDSKTGALHSRLDL

SGPTRRRLEQKLISEEDLAANDILDYKDDDDKV

Tag:	C-Myc/DDK
Purity:	> 80% as determined by SDS-PAGE and Coomassie blue staining
Concentration:	>0.05 µg/µL as determined by microplate BCA method
Labeling Method:	Labeled with [U- ¹³ C ₆ , ¹⁵ N ₄]-L-Arginine and [U- ¹³ C ₆ , ¹⁵ N ₂]-L-Lysine
Buffer:	25 mM Tris-HCl, 100 mM glycine, pH 7.3
Storage:	Store at -80°C. Avoid repeated freeze-thaw cycles.
Stability:	Stable for 3 months from receipt of products under proper storage and handling conditions.
RefSeq:	<u>NP_075555</u>
RefSeq Size:	2744
RefSeq ORF:	1128
Synonyms:	BPES; BPES1; PFRK; PINTO; POF3
Locus ID:	668



[View online »](#)

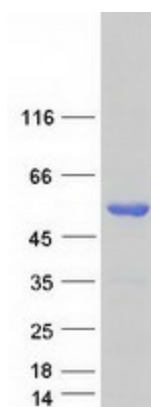
UniProt ID: [P58012](#), [Q53ZD3](#)

Cytogenetics: 3q22.3

Summary: This gene encodes a forkhead transcription factor. The protein contains a fork-head DNA-binding domain and may play a role in ovarian development and function. Expansion of a polyalanine repeat region and other mutations in this gene are a cause of blepharophimosis syndrome and premature ovarian failure 3. [provided by RefSeq, Jul 2016]

Protein Families: Druggable Genome, Transcription Factors

Product images:



Coomassie blue staining of purified FOXL2 protein (Cat# [TP309127]). The protein was produced from HEK293T cells transfected with FOXL2 cDNA clone (Cat# [RC209127]) using MegaTran 2.0 (Cat# [TT210002]).