

## Product datasheet for PH309124

### STX1B (NM\_052874) Human Mass Spec Standard

#### Product data:

Product Type:	Mass Spec Standards
Description:	STX1B MS Standard C13 and N15-labeled recombinant protein (NP_443106)
Species:	Human
Expression Host:	HEK293
Expression cDNA Clone or AA Sequence:	RC209124
Predicted MW:	33.2 kDa
Protein Sequence:	>RC209124 protein sequence Red=Cloning site Green=Tags(s)
	MKDRTQELRSKDSDEEEVVHVDHRDHFMDEFQVEEIRGCIEKLSQVQVKKQHSAILAAPNPDEKT KQLEDLTADIKKTANKVRSKLAIEQSIEQEEGLNRSSADLRIRKTHSTLSRKFVEVMTEYNATQSKY RDRCKDRIQRQLEITGRITTTNEELEDMLGKLAIFDIDKMSQMTKQALNEIETRHNEIIEKLETSIRE LHDMFVDMAMLVESQGEMIDRIEYNVEHSVDYVERAVSDTKKAVKYQSKARRKIMIIICCVVLGVVLAS SIGGTLGL
	TRTRPLEQKLISEEDLAANDILDYKDDDDKV
Tag:	C-Myc/DDK
Purity:	> 80% as determined by SDS-PAGE and Coomassie blue staining
Concentration:	>0.05 µg/µL as determined by microplate BCA method
Labeling Method:	Labeled with [U- <sup>13</sup> C <sub>6</sub> , <sup>15</sup> N <sub>4</sub> ]-L-Arginine and [U- <sup>13</sup> C <sub>6</sub> , <sup>15</sup> N <sub>2</sub> ]-L-Lysine
Buffer:	25 mM Tris-HCl, 100 mM glycine, pH 7.3
Storage:	Store at -80°C. Avoid repeated freeze-thaw cycles.
Stability:	Stable for 3 months from receipt of products under proper storage and handling conditions.
RefSeq:	<a href="#">NP_443106</a>
RefSeq Size:	4544
RefSeq ORF:	864
Synonyms:	GEFSP9; STX1B1; STX1B2
Locus ID:	112755



[View online »](#)

UniProt ID: [P61266](#)

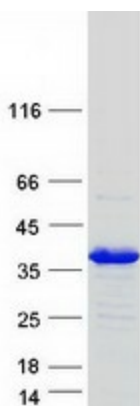
Cytogenetics: 16p11.2

**Summary:** The protein encoded by this gene belongs to a family of proteins thought to play a role in the exocytosis of synaptic vesicles. Vesicle exocytosis releases vesicular contents and is important to various cellular functions. For instance, the secretion of transmitters from neurons plays an important role in synaptic transmission. After exocytosis, the membrane and proteins from the vesicle are retrieved from the plasma membrane through the process of endocytosis. Mutations in this gene have been identified as one cause of fever-associated epilepsy syndromes. A possible link between this gene and Parkinson's disease has also been suggested. [provided by RefSeq, Jan 2015]

**Protein Families:** Druggable Genome, Transmembrane

**Protein Pathways:** SNARE interactions in vesicular transport

### Product images:



Coomassie blue staining of purified STX1B protein (Cat# [TP309124]). The protein was produced from HEK293T cells transfected with STX1B cDNA clone (Cat# [RC209124]) using MegaTran 2.0 (Cat# [TT210002]).