

## Product datasheet for PH309123

### SSPN (NM\_005086) Human Mass Spec Standard

#### Product data:

Product Type:	Mass Spec Standards
Description:	SSPN MS Standard C13 and N15-labeled recombinant protein (NP_005077)
Species:	Human
Expression Host:	HEK293
Expression cDNA Clone or AA Sequence:	RC209123
Predicted MW:	26.6 kDa
Protein Sequence:	>RC209123 protein sequence Red=Cloning site Green=Tags(s)  MGKMKQPRGQQRQGGPPAADAAGPDDMEPKKGTGAPKECGEEEPRTCCGCRFPLLALLQLALGIAVTVV GFLMASISSLLVRDTPFWAGIIVCLVAYLGLFMLCVSYQVDERTCIQFSMKLLYFLLSALGLTVCVLAV AFAAHYSQLTQFTCETTLDSCQCKLPSSSEPLSRFTVYRDVTDCTSVTGTGFKLFLLIQMI LNLCGLVCL LACFVMWKHRYQVFYVGVIRICSLTASEGPQQKI  TRTRPLEQKLI SEEDLAANDILDYKDDDDKV
Tag:	C-Myc/DDK
Purity:	> 80% as determined by SDS-PAGE and Coomassie blue staining
Concentration:	>0.05 µg/µL as determined by microplate BCA method
Labeling Method:	Labeled with [U- 13C6, 15N4]-L-Arginine and [U- 13C6, 15N2]-L-Lysine
Buffer:	25 mM Tris-HCl, 100 mM glycine, pH 7.3
Storage:	Store at -80°C. Avoid repeated freeze-thaw cycles.
Stability:	Stable for 3 months from receipt of products under proper storage and handling conditions.
RefSeq:	<u><a href="#">NP_005077</a></u>
RefSeq Size:	4547
RefSeq ORF:	729
Synonyms:	DAGA5; KRAG; NSPN; SPN1; SPN2
Locus ID:	8082
UniProt ID:	<u><a href="#">Q14714</a></u>



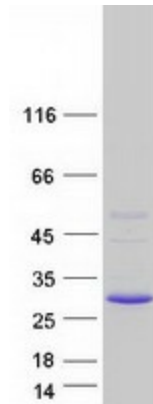
[View online »](#)

**Cytogenetics:** 12p12.1

**Summary:** This gene encodes a member of the dystrophin-glycoprotein complex (DGC). The DGC spans the sarcolemma and is comprised of dystrophin, syntrophin, alpha- and beta-dystroglycans and sarcoglycans. The DGC provides a structural link between the subsarcolemmal cytoskeleton and the extracellular matrix of muscle cells. Two alternatively spliced transcript variants that encode different protein isoforms have been described. [provided by RefSeq, Oct 2008]

**Protein Families:** Druggable Genome, Transmembrane

**Product images:**



Coomassie blue staining of purified SSPN protein (Cat# [TP309123]). The protein was produced from HEK293T cells transfected with SSPN cDNA clone (Cat# [RC209123]) using MegaTran 2.0 (Cat# [TT210002]).