

Product datasheet for PH309074

RPS7 (NM_001011) Human Mass Spec Standard

Product data:

Product Type:	Mass Spec Standards
Description:	RPS7 MS Standard C13 and N15-labeled recombinant protein (NP_001002)
Species:	Human
Expression Host:	HEK293
Expression cDNA Clone or AA Sequence:	RC209074
Predicted MW:	21.9 kDa
Protein Sequence:	>RC209074 representing NM_001011 Red=Cloning site Green=Tags(s) MFSSSAKIVKPNGEKPDEFESGISQALLEMNSDLKAQLRELNITAAKEIEVGGGRKAIIFVVPVQLK SFQKIQVRLVRELEKKFSGKHVVFIAQRRILPKPTRKSRTKNKQKRPRSRTLAVHDAILEDLVFPSEIV GKRIRVKLDGSRLIKVHLDKAQQNNVEHKVETFSGVYKLLTGKDVNFEFPEFQL TRTRPLEQKLISEEDLAANDILDYKDDDDKV
Tag:	C-Myc/DDK
Purity:	> 80% as determined by SDS-PAGE and Coomassie blue staining
Concentration:	>0.05 µg/µL as determined by microplate BCA method
Labeling Method:	Labeled with [U- 13C6, 15N4]-L-Arginine and [U- 13C6, 15N2]-L-Lysine
Buffer:	25 mM Tris-HCl, 100 mM glycine, pH 7.3
Storage:	Store at -80°C. Avoid repeated freeze-thaw cycles.
Stability:	Stable for 3 months from receipt of products under proper storage and handling conditions.
RefSeq:	NP_001002
RefSeq Size:	745
RefSeq ORF:	582
Synonyms:	DBA8; eS7; S7
Locus ID:	6201
UniProt ID:	P62081



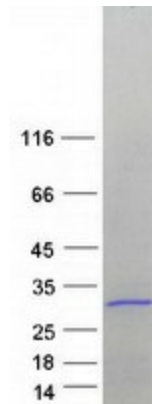
[View online »](#)

Cytogenetics: 2p25.3

Summary: Ribosomes, the organelles that catalyze protein synthesis, consist of a small 40S subunit and a large 60S subunit. Together these subunits are composed of 4 RNA species and approximately 80 structurally distinct proteins. This gene encodes a ribosomal protein that is a component of the 40S subunit. The protein belongs to the S7E family of ribosomal proteins. It is located in the cytoplasm. As is typical for genes encoding ribosomal proteins, there are multiple processed pseudogenes of this gene dispersed through the genome. [provided by RefSeq, Jul 2008]

Protein Pathways: Ribosome

Product images:



Coomassie blue staining of purified RPS7 protein (Cat# [TP309074]). The protein was produced from HEK293T cells transfected with RPS7 cDNA clone (Cat# [RC209074]) using MegaTran 2.0 (Cat# [TT210002]).