

## Product datasheet for PH309072

### Chymotrypsin like protease (CTRL) (NM\_001907) Human Mass Spec Standard

#### Product data:

Product Type:	Mass Spec Standards
Description:	CTRL MS Standard C13 and N15-labeled recombinant protein (NP_001898)
Species:	Human
Expression Host:	HEK293
Expression cDNA Clone or AA Sequence:	RC209072
Predicted MW:	28 kDa
Protein Sequence:	>RC209072 protein sequence Red=Cloning site Green=Tags(s)  MLLLSLTSLVLLGSSWGCIPAIKPAISFSQRIVNGENAVLGSWPQVSLQDSSGFHFCCGSLISQSWV VTAAHNCNVSPGRHFVVLGEYDRSSNAEPLQVLSVSRAITHPSWNSTTMNNDVTLKLASPAQYTTTRISPV CLASSNEALTEGLTCVTTGWRLSGVGNVTPAHLQQVALPLVTVNQCRQYWGSSITDSMICAGGAGASSC QGDSGGPLVCQKGNWVLIIGIVSWGTKNCNVRAPAVYTRVSKFSTWINQVIAYN  TRTRPLEQKLI SEEDLAANDILDYKDDDDKV
Tag:	C-Myc/DDK
Purity:	> 80% as determined by SDS-PAGE and Coomassie blue staining
Concentration:	>0.05 µg/µL as determined by microplate BCA method
Labeling Method:	Labeled with [U- 13C6, 15N4]-L-Arginine and [U- 13C6, 15N2]-L-Lysine
Buffer:	25 mM Tris-HCl, 100 mM glycine, pH 7.3
Storage:	Store at -80°C. Avoid repeated freeze-thaw cycles.
Stability:	Stable for 3 months from receipt of products under proper storage and handling conditions.
RefSeq:	<a href="#">NP_001898</a>
RefSeq Size:	1197
RefSeq ORF:	792
Synonyms:	CTRL1
Locus ID:	1506
UniProt ID:	<a href="#">P40313</a> , <a href="#">A0A024R6Z5</a>



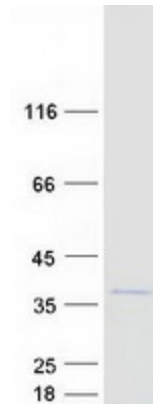
[View online »](#)

Cytogenetics: 16q22.1

**Summary:** This gene encodes a serine-type endopeptidase with chymotrypsin- and elastase-2-like activities. The gene encoding this zymogen is expressed specifically in the pancreas and likely functions as a digestive enzyme. [provided by RefSeq, Sep 2016]

**Protein Families:** Druggable Genome, Protease

**Product images:**



Coomassie blue staining of purified CTRL protein (Cat# [TP309072]). The protein was produced from HEK293T cells transfected with CTRL cDNA clone (Cat# [RC209072]) using MegaTran 2.0 (Cat# [TT210002]).