

Product datasheet for PH309064

EXTL1 (NM_004455) Human Mass Spec Standard

Product data:

Product Type:	Mass Spec Standards
Description:	EXTL1 MS Standard C13 and N15-labeled recombinant protein (NP_004446)
Species:	Human
Expression Host:	HEK293
Expression cDNA Clone or AA Sequence:	RC209064
Predicted MW:	74.7 kDa
Protein Sequence:	>RC209064 protein sequence Red=Cloning site Green=Tags(s)

MQSWRRRKSLLWALSASWLLLVLGGFSLRLALPPRPRPGASQGWPRWDAELLQSFSQPGELPEDAVS
PPQAPHGGSCNWESECFDTSKCRGDGLKVFVYPVAVGTISETHRRILASIEGSRFYTFSPAGACLLLLSLD
AQTGECSSMPLQWNRGRNHLVLRHPAPCPTFQLGQAMVAEASPTVDSFRPGFDVALPFLPEAHPLRGG
APGQLRQHSPQPQVALLALEEERGGWRTADTGSSACPWDGRCEQDPGPGQTQRQETLPNATFCLISGHRP
EAASRFLQALQAGCIPVLLSPRWELPFSEVIDWTKAAIVADERLPLQVLAALQEMSPARVLRQQTQFL
WDAYFSSVEKVIHTTLEVIQDRIFGTSAHPSLLWNSPPGALLALSTFSTSPQDFPFYYLQQGSRPEGRFS
ALIWVGPPQPPLKLIQAVAGSQHCAQILVLSNERPLPSRWPETAVPLTVIDGHRKVSDFYFYSTIRT
DAILSLDARSSLSTSEVDF AFLVWQSFPERMVGF LTSSHFWDEAHGGWGYAERTNEFSMVLTTAAFYHR
YYHTLFTHSLPKALRTL ADEAPTCVDVLMNFIVA AVTKLPP IKVPYQKQRQEAAPLAPGGPGRPKPPAP
APDCINQIAAAF GHMPLLSSRLRLDPVLFKDPVSVQRKKYRSLEKP

TRTRPLEQKLI SEEDLAANDILDYKDDDDKV

Tag:	C-Myc/DDK
Purity:	> 80% as determined by SDS-PAGE and Coomassie blue staining
Concentration:	>0.05 µg/µL as determined by microplate BCA method
Labeling Method:	Labeled with [U- ¹³ C ₆ , ¹⁵ N ₄]-L-Arginine and [U- ¹³ C ₆ , ¹⁵ N ₂]-L-Lysine
Buffer:	25 mM Tris-HCl, 100 mM glycine, pH 7.3
Storage:	Store at -80°C. Avoid repeated freeze-thaw cycles.
Stability:	Stable for 3 months from receipt of products under proper storage and handling conditions.
RefSeq:	NP_004446
RefSeq Size:	4021



[View online »](#)

RefSeq ORF: 2028

Synonyms: EXTL

Locus ID: 2134

UniProt ID: [Q92935](#)

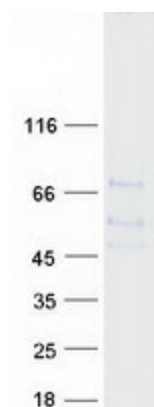
Cytogenetics: 1p36.11

Summary: This gene is a member of the multiple exostoses (EXT) family of glycosyltransferases, which function in the chain polymerization of heparan sulfate and heparin. The encoded protein harbors alpha 1,4- N-acetylglucosaminyltransferase activity, and is involved in chain elongation of heparan sulfate and possibly heparin. [provided by RefSeq, Jul 2008]

Protein Families: Transmembrane

Protein Pathways: Heparan sulfate biosynthesis, Metabolic pathways

Product images:



Coomassie blue staining of purified EXTL1 protein (Cat# [TP309064]). The protein was produced from HEK293T cells transfected with EXTL1 cDNA clone (Cat# [RC209064]) using MegaTran 2.0 (Cat# [TT210002]).