

Product datasheet for PH309060

SCML2 (NM_006089) Human Mass Spec Standard

Product data:

Product Type:	Mass Spec Standards
Description:	SCML2 MS Standard C13 and N15-labeled recombinant protein (NP_006080)
Species:	Human
Expression Host:	HEK293
Expression cDNA Clone or AA Sequence:	RC209060
Predicted MW:	77.3 kDa
Protein Sequence:	>RC209060 protein sequence Red=Cloning site Green=Tags(s)

MGQTVNEDSMDVKKENQEKTPQSSTSSVQRDDFHWEYLKETGSIAPSECFRQSQIPPVNDFKVGMKLE
ARDPRNATSVCIATVIGITGARLRRLDGSNDRNDFWRLVDSPIQPVTGCEKEGDLQPPLGYQMNTSS
WPMFLLKTLNGSEMASATLFKKEPPKPLNFKVGMKLEAIDKKNPYLICPATIGDVKGDEVHITFDGWS
GAFDYWCKYDSRDIFPAGWCRLTGDVLQPPGTSVPIVKNIAKTESSPSEASQHSMSQPQKTTLILPTQQV
RRSSRIKPPGPTAVPKRSSVKNITPRKKGPNSSGKKEKPLPVICSTSAASLKSLTRDRGMLYKDVASGPC
KIVMSTVCVYVKNHGNFGPHLDPKRIQQLPDHFPGPVNVVLRRIVQACVDALETKTTFVGYLKPDNRGG
EVITASFDGETHSIQLPPVNSASFALRFLNFCHSLQCDNLLSSQPFSSSRGHTHSSAEHDKNSAKEDV
TERQSTKRSPQQTVPYVVPLSPKLPKTKEYASEGEPLFAGGSAIPKEENLSEDSKSSSLNSGNYLNPACR
NPMYIHTSVSQDFRSVPGTSSPLVGDISPSSPHEVKFQMQRKSEAPSYIAVPDPSVLKQGFSDPST
WSVDEVIQFMKHTDPQISGPLADLFRQHEIDGKALFLLKSDVMMKYMGLKLGPAKLCYYIEKLKEGKYS

TRTRPLEQKLISEEDLAANDILDYKDDDDKV

Tag:	C-Myc/DDK
Purity:	> 80% as determined by SDS-PAGE and Coomassie blue staining
Concentration:	>0.05 µg/µL as determined by microplate BCA method
Labeling Method:	Labeled with [U- 13C6, 15N4]-L-Arginine and [U- 13C6, 15N2]-L-Lysine
Buffer:	25 mM Tris-HCl, 100 mM glycine, pH 7.3
Storage:	Store at -80°C. Avoid repeated freeze-thaw cycles.
Stability:	Stable for 3 months from receipt of products under proper storage and handling conditions.
RefSeq:	NP_006080
RefSeq Size:	4212



[View online »](#)

RefSeq ORF: 2100

Locus ID: 10389

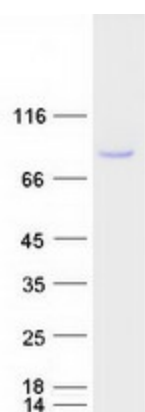
UniProt ID: [Q9UQR0](#)

Cytogenetics: Xp22.13

Summary: This gene encodes a member of the Polycomb group proteins. These proteins form the Polycomb repressive complexes which are involved in transcriptional repression. The encoded protein binds histone peptides that are monomethylated at lysine residues and may be involved in regulating homeotic gene expression during development. [provided by RefSeq, Jun 2010]

Protein Families: Transcription Factors

Product images:



Coomassie blue staining of purified SCML2 protein (Cat# [TP309060]). The protein was produced from HEK293T cells transfected with SCML2 cDNA clone (Cat# [RC209060]) using MegaTran 2.0 (Cat# [TT210002]).