

## Product datasheet for PH309056

### SEC23IP (NM\_007190) Human Mass Spec Standard

#### Product data:

Product Type:	Mass Spec Standards
Description:	SEC23IP MS Standard C13 and N15-labeled recombinant protein (NP_009121)
Species:	Human
Expression Host:	HEK293
Expression cDNA Clone or AA Sequence:	RC209056
Predicted MW:	111.1 kDa
Protein Sequence:	>RC209056 protein sequence Red=Cloning site Green=Tags(s)

MAERKPNGGGSGGASTSSSGTNLLFSSSATEFSFNVPFIPVQTQASASPASLLLPGEDSTDVGEEDSFLGQT  
SIHTSAPQTFSYFSQVSSSDPFGNIGQSPLTTAATSVGQSGFPKPLTALPFTTGSQDVSNFSPSISKA  
QPGAPSSLMGINSYLPSPSSLPSPSYFGNQPGIPQPGYNPYRHTPGSSRANPYIAPPQLQQCQTPGPP  
AHPPPSGPPVQMYQMPPGSLPPVPSSVQSPAQQQVPARPGAPSVQVPSFLLQNQYEPVQPHWFYCKEVE  
YKQLWMPFSVFDLNLLEEIYNSVQPDPESSVVLGTDGGRYDVLYDRIRKAAWEEPEAEVRRCTWFYKGD  
TDSRFIPYTEEFSEKLEAEYKKAHTTNQWHRRLFFPSGETIVMHNPKVIVQFQPSSVPDEWGTTQDGQTR  
PRVVKRGIDDNLDEIPDGEMPQVDHLVFVHVGIGPVCDLRFRSIIECVDDFRVSLKLLRTHFKSLDDG  
KYSRVEFLPVHWHSSLGGDATGVDRNIKKITLPSIGRFRHFTNETLLDILFYNSPTYCQTIVEKVGMEIN  
HLHALFMSRNPDKFGGVSAGHSLGSLILFDILSNQKDLNLSKCPGLAVANGVVKQLHFQEKQMPPEEPK  
LTLDESVDLVVENKEVLTQETLEALSLEYFSTFEKEKIDMESLLMCTVDDLKEMGIPLGPRKKIANFV  
EHKAAKLKKAASEKKAATSTKGQEQSAQKTKDMASLPSESNEPKRKLPGVACVSSVCVNYESFEVGAG  
QVSVAYNSLDFEPEIFFALGSPIAMFLTIRGVDRIDENYSLPTCKGFFNIYHPLDPVAYRLEPMIVPDL  
LKAVLIPHKKGRRLHLELKESSLRMSDLKQGFISLKSAWQTLNEFARAHTSSTQLQEELEKVANQIK  
EEEEKQVVEAEKVVEPDFSKDEDYLGKVGMLNGGRRIDYVYLQEKPIESFNEYLFALQSHLCYWESEDTA  
LLLLKEIYRTMNISPEQPQH

TRTRPLEQKLISEEDLAANDILDYKDDDDKV

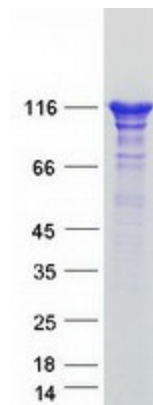
Tag:	C-Myc/DDK
Purity:	> 80% as determined by SDS-PAGE and Coomassie blue staining
Concentration:	>0.05 µg/µL as determined by microplate BCA method
Labeling Method:	Labeled with [U- <sup>13</sup> C <sub>6</sub> , <sup>15</sup> N <sub>4</sub> ]-L-Arginine and [U- <sup>13</sup> C <sub>6</sub> , <sup>15</sup> N <sub>2</sub> ]-L-Lysine
Buffer:	25 mM Tris-HCl, 100 mM glycine, pH 7.3
Storage:	Store at -80°C. Avoid repeated freeze-thaw cycles.



[View online »](#)

Stability:	Stable for 3 months from receipt of products under proper storage and handling conditions.
RefSeq:	<a href="#">NP_009121</a>
RefSeq Size:	7306
RefSeq ORF:	3000
Synonyms:	iPLA1beta; MSTP053; P125; P125A
Locus ID:	11196
UniProt ID:	<a href="#">Q9Y6Y8</a>
Cytogenetics:	10q26.11-q26.12
Summary:	This gene encodes a member of the phosphatidic acid preferring-phospholipase A1 family. The encoded protein is localized to endoplasmic reticulum exit sites and plays a critical role in ER-Golgi transport as part of the multimeric coat protein II complex. An orthologous gene in frogs is required for normal neural crest cell development, suggesting that this gene may play a role in Waardenburg syndrome neural crest defects. Alternatively spliced transcript variants have been observed for this gene. [provided by RefSeq, Feb 2011]

### Product images:



Coomassie blue staining of purified SEC23IP protein (Cat# [TP309056]). The protein was produced from HEK293T cells transfected with SEC23IP cDNA clone (Cat# [RC209056]) using MegaTran 2.0 (Cat# [TT210002]).