

Product datasheet for PH309028

Estrogen Related Receptor alpha (ESRRA) (NM_004451) Human Mass Spec Standard

Product data:

Product Type:	Mass Spec Standards
Description:	ESRRA MS Standard C13 and N15-labeled recombinant protein (NP_004442)
Species:	Human
Expression Host:	HEK293
Expression cDNA Clone or AA Sequence:	RC209028
Predicted MW:	45.5 kDa
Protein Sequence:	>RC209028 representing NM_004451 Red=Cloning site Green=Tags(s) MSSQVVGIEPLYIKAEPASPDSPKGSSETETEPVALAPGPAPTRCLPGHKEEDGEGAGPGEQGGKLV LSSLPKRLCLVCGDVASGYHYGVASCEACKAFFKRTIQGSIEYSCPASNECEITKRRRKACQACRFTKCL RVGMLKEGVRLDRVRGGRQKYKRRPEVDPLPFGPFPAGPLAVAGGPRKTAAPVNALVSHLLVVEPEKLY AMPDPAGPDGHLPAVATLCDLFDREIVVTISWAKSIPGFSSLSLSDQMSVLQSVWMEVLVLGVAQRSLPL QDELAF AEDLVLDEEGARAAGLGELGAALLQLVRRQLALRLEEEYVLLKALALANSDSVHIEDAEAVEQ LREALHEALLEYEAGRAGPGGAERRRAGRLLLTPLLRQTAGKVL AHFYGVKLEGKVP MHKLFLEMLEA MMD TRTRPLEQKLI SEEDLAANDILDYKDDDDKV
Tag:	C-Myc/DDK
Purity:	> 80% as determined by SDS-PAGE and Coomassie blue staining
Concentration:	>0.05 µg/µL as determined by microplate BCA method
Labeling Method:	Labeled with [U- ¹³ C ₆ , ¹⁵ N ₄]-L-Arginine and [U- ¹³ C ₆ , ¹⁵ N ₂]-L-Lysine
Buffer:	25 mM Tris-HCl, 100 mM glycine, pH 7.3
Storage:	Store at -80°C. Avoid repeated freeze-thaw cycles.
Stability:	Stable for 3 months from receipt of products under proper storage and handling conditions.
RefSeq:	<u>NP_004442</u>
RefSeq Size:	2284
RefSeq ORF:	1269
Synonyms:	ERR1; ERRa; ERRalpha; ESRL1; NR3B1



[View online »](#)

Locus ID: 2101

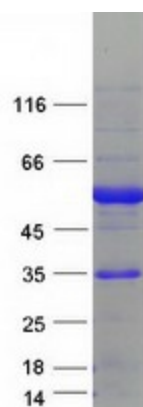
UniProt ID: [P11474](#), [Q569H8](#)

Cytogenetics: 11q13.1

Summary: The protein encoded by this gene is a nuclear receptor that is most closely related to the estrogen receptor. This protein acts as a site-specific transcription factor and interacts with members of the PGC-1 family of transcription cofactors to regulate the expression of most genes involved in cellular energy production as well as in the process of mitochondrial biogenesis. A processed pseudogene of ESRRA is located on chromosome 13q12.1. [provided by RefSeq, Jun 2019]

Protein Families: Druggable Genome, Nuclear Hormone Receptor, Transcription Factors

Product images:



Coomassie blue staining of purified ESRRA protein (Cat# [TP309028]). The protein was produced from HEK293T cells transfected with ESRRA cDNA clone (Cat# [RC209028]) using MegaTran 2.0 (Cat# [TT210002]).