

## Product datasheet for PH309025

### Josephin 2 (JOSD2) (NM\_138334) Human Mass Spec Standard

#### Product data:

Product Type:	Mass Spec Standards
Description:	JOSD2 MS Standard C13 and N15-labeled recombinant protein (NP_612207)
Species:	Human
Expression Host:	HEK293
Expression cDNA Clone or AA Sequence:	RC209025
Predicted MW:	20.8 kDa
Protein Sequence:	>RC209025 protein sequence Red=Cloning site Green=Tags(s)  MSQAPGAQPSPPTVYHERQRLELCVHALNNVLQQQLFSQEADEICKRLAPDSRLNPHRSLLGTGNYDV NVI MAALQGLGLAAVWDRRRPLSQLALPQVLGLILNLPSPVSLGLLSLPLRRRHVVALRQVDGVYYNLD SKLRAPEALGDEDGVRAFLAAALAQGLCEVLLVVTKEVEEKGSWLRD  TRTRPLEQKLISEEDLAANDILDYKDDDDKV
Tag:	C-Myc/DDK
Purity:	> 80% as determined by SDS-PAGE and Coomassie blue staining
Concentration:	>0.05 µg/µL as determined by microplate BCA method
Labeling Method:	Labeled with [U- <sup>13</sup> C <sub>6</sub> , <sup>15</sup> N <sub>4</sub> ]-L-Arginine and [U- <sup>13</sup> C <sub>6</sub> , <sup>15</sup> N <sub>2</sub> ]-L-Lysine
Buffer:	25 mM Tris-HCl, 100 mM glycine, pH 7.3
Storage:	Store at -80°C. Avoid repeated freeze-thaw cycles.
Stability:	Stable for 3 months from receipt of products under proper storage and handling conditions.
RefSeq:	<a href="#">NP_612207</a>
RefSeq Size:	863
RefSeq ORF:	564
Synonyms:	SBBI54
Locus ID:	126119
UniProt ID:	<a href="#">Q8TAC2</a> , <a href="#">A0A024R4G2</a>



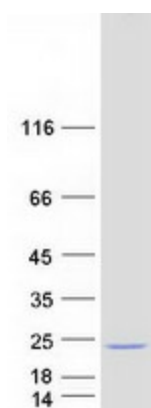
[View online »](#)

Cytogenetics: 19q13.33

**Summary:** This gene encodes a protein containing a Josephin domain. Josephin domain-containing proteins are deubiquitinating enzymes which catalyze the hydrolysis of the bond between the C-terminal glycine of the ubiquitin peptide and protein substrates. Alternatively spliced transcript variants encoding multiple isoforms have been observed for this gene. [provided by RefSeq, Jul 2012]

Protein Families: Druggable Genome

### Product images:



Coomassie blue staining of purified JOSD2 protein (Cat# [TP309025]). The protein was produced from HEK293T cells transfected with JOSD2 cDNA clone (Cat# [RC209025]) using MegaTran 2.0 (Cat# [TT210002]).