

## Product datasheet for PH308993

### JMJD6 (NM\_015167) Human Mass Spec Standard

#### Product data:

Product Type:	Mass Spec Standards
Description:	JMJD6 MS Standard C13 and N15-labeled recombinant protein (NP_055982)
Species:	Human
Expression Host:	HEK293
Expression cDNA Clone or AA Sequence:	RC208993
Predicted MW:	46.5 kDa
Protein Sequence:	>RC208993 protein sequence Red=Cloning site Green=Tags(s)

MNHKSKKRIREAKRSARPELKDSLWTRHNYYESFSLSPAADVADNVERADALQLSVEEFVERYERPYKPV  
VLLNAQEGWSAQEKWTLERLKRKYRNQKFKCGEDNDGYSVKMKMKYYIEYMESTRDDSPLYIFDSSYGEH  
PKRRKLLLEDYKVPKFFTDLLFQYAGEKRRPPYRWFVMGPPRSGTGIHIDPLGTSAWNALVQGHKRWCLFP  
TSTPRELIKVTRDEGGNQDEAITWFNVIYPTQLPTWPPEFKPLEILQKPGETVFPGGWWHVNLNLD  
TIAITQNFASSTNFPVWHKTVRGRPKLSRKWYRILKQEHPELAVLADSVDLQESTGIASDSSSDSSSS  
SSSSSDSECESESGEGDGTVHRRKKRRRTCSMVGNGDTSQDDCVSKERSSSR

TRTRPLEQKLISEEDLAANDILDYKDDDDKV

Tag:	C-Myc/DDK
Purity:	> 80% as determined by SDS-PAGE and Coomassie blue staining
Concentration:	>0.05 µg/µL as determined by microplate BCA method
Labeling Method:	Labeled with [U- <sup>13</sup> C <sub>6</sub> , <sup>15</sup> N <sub>4</sub> ]-L-Arginine and [U- <sup>13</sup> C <sub>6</sub> , <sup>15</sup> N <sub>2</sub> ]-L-Lysine
Buffer:	25 mM Tris-HCl, 100 mM glycine, pH 7.3
Storage:	Store at -80°C. Avoid repeated freeze-thaw cycles.
Stability:	Stable for 3 months from receipt of products under proper storage and handling conditions.
RefSeq:	<a href="#">NP_055982</a>
RefSeq Size:	1834
RefSeq ORF:	1209
Synonyms:	PSR; PTDSR; PTDSR1
Locus ID:	23210



[View online »](#)

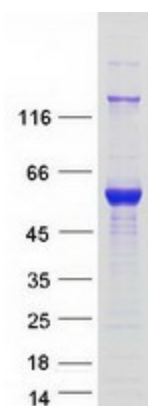
UniProt ID: [Q6NYC1](#)

Cytogenetics: 17q25.1

**Summary:** This gene encodes a nuclear protein with a JmjC domain. JmjC domain-containing proteins are predicted to function as protein hydroxylases or histone demethylases. This protein was first identified as a putative phosphatidylserine receptor involved in phagocytosis of apoptotic cells; however, subsequent studies have indicated that it does not directly function in the clearance of apoptotic cells, and questioned whether it is a true phosphatidylserine receptor. Multiple transcript variants encoding different isoforms have been found for this gene. [provided by RefSeq, Jul 2008]

**Protein Families:** Druggable Genome, ES Cell Differentiation/IPS

### Product images:



Coomassie blue staining of purified JMJD6 protein (Cat# [TP308993]). The protein was produced from HEK293T cells transfected with JMJD6 cDNA clone (Cat# [RC208993]) using MegaTran 2.0 (Cat# [TT210002]).