

## Product datasheet for PH308980

### RDH10 (NM\_172037) Human Mass Spec Standard

#### Product data:

Product Type:	Mass Spec Standards
Description:	RDH10 MS Standard C13 and N15-labeled recombinant protein (NP_742034)
Species:	Human
Expression Host:	HEK293
Expression cDNA Clone or AA Sequence:	RC208980
Predicted MW:	38.1 kDa
Protein Sequence:	>RC208980 protein sequence Red=Cloning site Green=Tags(s)

MNIVVEFFVVTFKVLWAFVLAARWLVRPKEKSVAGQVCLITGAGSGLGRLFALEFARRRALLVLWDINT  
QSNEETAGMVRHIYRDLEAADAALQAGNGEEEILPHCNLQVFTYTCDVGKRENVYLTAERVKEVGEVS  
VLVNNAGVYSGHLLLECPDELIERTMMVNCHAHFWTTKAFLPTMLEINHGHIIVTVASSLGLFSTAGVEDY  
CASKFGVVGFHESLSHELKAAEKDGIKTTLVCPYLVDTGMRGCRIRKEIEPFLPPLKPDYCVKQAMKAI  
LTDQPMICTPRLMYIVTFMKSILPFEAVVCMYRFLGADKCMYPIAQRKQATNNNEAKNGI

TRTRPLEQKLISEEDLAANDILDYKDDDDKV

Tag:	C-Myc/DDK
Purity:	> 80% as determined by SDS-PAGE and Coomassie blue staining
Concentration:	>0.05 µg/µL as determined by microplate BCA method
Labeling Method:	Labeled with [U- <sup>13</sup> C <sub>6</sub> , <sup>15</sup> N <sub>4</sub> ]-L-Arginine and [U- <sup>13</sup> C <sub>6</sub> , <sup>15</sup> N <sub>2</sub> ]-L-Lysine
Buffer:	25 mM Tris-HCl, 100 mM glycine, pH 7.3
Storage:	Store at -80°C. Avoid repeated freeze-thaw cycles.
Stability:	Stable for 3 months from receipt of products under proper storage and handling conditions.
RefSeq:	<a href="#">NP_742034</a>
RefSeq Size:	3981
RefSeq ORF:	1023
Synonyms:	SDR16C4
Locus ID:	157506



[View online »](#)

UniProt ID: [Q8IZV5](#), [A0A024R7X6](#)

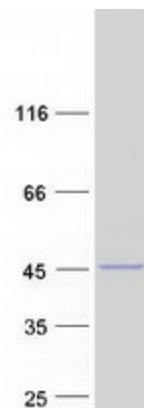
Cytogenetics: 8q21.11

Summary: This gene encodes a retinol dehydrogenase, which converts all-trans-retinol to all-trans-retinal, with preference for NADP as a cofactor. Studies in mice suggest that this protein is essential for synthesis of embryonic retinoic acid and is required for limb, craniofacial, and organ development. [provided by RefSeq, Dec 2011]

Protein Families: Druggable Genome, Transmembrane

Protein Pathways: Metabolic pathways, Retinol metabolism

### Product images:



Coomassie blue staining of purified RDH10 protein (Cat# [TP308980]). The protein was produced from HEK293T cells transfected with RDH10 cDNA clone (Cat# [RC208980]) using MegaTran 2.0 (Cat# [TT210002]).