

Product datasheet for PH308949

Adenine Nucleotide Translocator 2 (SLC25A5) (NM_001152) Human Mass Spec Standard

Product data:

Product Type:	Mass Spec Standards
Description:	SLC25A5 MS Standard C13 and N15-labeled recombinant protein (NP_001143)
Species:	Human
Expression Host:	HEK293
Expression cDNA Clone or AA Sequence:	RC208949
Predicted MW:	32.9 kDa
Protein Sequence:	>RC208949 protein sequence Red=Cloning site Green=Tags(s)

MTDAAVSF AKDFLAGGVAAAISK TAVAPIERVKLLLQVQHASKQITADKQYKGIIDCVVRIPKEQGVL SF
WRGNLANVIRYFPTQALNFAFKDKYKQIFLGGVDKRTQFWRYFAGNLASGGAAGATSLCFVYPLDFARTR
LAADV GKAGAEREF RGLGDCLVKIYKSDGIKGLYQGFNVSVQGI IYRAAYFGIYDTAKGMLPDPKNTHI
VISWMI AQTVTAVAGLTSYPFDTVRRMMMQSGRKGTDIMYTGTLDCWRKIARDEGGKAFKGAWSNVL R
GMGGAFVLVLYDEIKKYT

TRTRPLEQKLI SEEDLAANDILDYKDDDDKV

Tag:	C-Myc/DDK
Purity:	> 80% as determined by SDS-PAGE and Coomassie blue staining
Concentration:	>0.05 µg/µL as determined by microplate BCA method
Labeling Method:	Labeled with [U- ¹³ C ₆ , ¹⁵ N ₄]-L-Arginine and [U- ¹³ C ₆ , ¹⁵ N ₂]-L-Lysine
Buffer:	25 mM Tris-HCl, 100 mM glycine, pH 7.3
Storage:	Store at -80°C. Avoid repeated freeze-thaw cycles.
Stability:	Stable for 3 months from receipt of products under proper storage and handling conditions.
RefSeq:	<u>NP_001143</u>
RefSeq Size:	1351
RefSeq ORF:	894
Synonyms:	2F1; AAC2; ANT2; T2; T3
Locus ID:	292



[View online »](#)

UniProt ID: [P05141](#), [Q6NVCO](#)

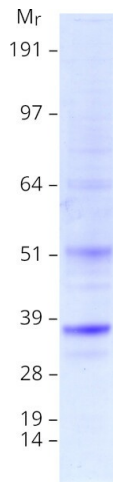
Cytogenetics: Xq24

Summary: This gene is a member of the mitochondrial carrier subfamily of solute carrier protein genes. The product of this gene functions as a gated pore that translocates ADP from the cytoplasm into the mitochondrial matrix and ATP from the mitochondrial matrix into the cytoplasm. The protein forms a homodimer embedded in the inner mitochondria membrane. Suppressed expression of this gene has been shown to induce apoptosis and inhibit tumor growth. The human genome contains several non-transcribed pseudogenes of this gene.[provided by RefSeq, Jun 2013]

Protein Families: Druggable Genome, Transmembrane

Protein Pathways: Calcium signaling pathway, Huntington's disease, Parkinson's disease

Product images:



Coomassie blue staining of purified SLC25A5 protein (Cat# [TP308949]). The protein was produced from HEK293T cells transfected with SLC25A5 cDNA clone (Cat# [RC208949]) using MegaTran 2.0 (Cat# [TT210002]).