

Product datasheet for PH308938

Synaptotagmin 1 (SYT1) (NM_005639) Human Mass Spec Standard

Product data:

Product Type:	Mass Spec Standards
Description:	SYT1 MS Standard C13 and N15-labeled recombinant protein (NP_005630)
Species:	Human
Expression Host:	HEK293
Expression cDNA Clone or AA Sequence:	RC208938
Predicted MW:	47.4 kDa
Protein Sequence:	>RC208938 representing NM_005639 Red=Cloning site Green=Tags(s) MVSESHHEALAAPPVTTVATVLPNATEPASPGEKEDAFSKLKEKFMNELHKIPLPPWALIAIAIVAVL LVLTCFCICKKCLFKKKKNGKKEKGGKNAINMKDVKDLGKTMKDQALKDDDAETGLTDGEEKEEPKEE EKLKGLQYSLDYDFQNNQLLVGIIQAAELPALDMGGTSDPYVKVFLLPDKKKKFETKVHRKTLNPFVNEQ FTFKVPYSELGGKTLVMAVYDFDRFSKHDIIIGEFKVPMTVDVFGHVTEEWRDLQSAEKEEQEKLGDICFS LRYVPTAGKLTVVILEAKNLKMDVGGLSDPYVKIHLMQNGKRLKKKTTIKKNTLNPYYNESFSFEVPPF EQIQKVQVVVTVLDYDKIGKNDIIGKVFVGYNSTGAELRHWSMLANPRRPIAQWHTLQVEEVDAMLAV KK TRTRPLEQKLISEEDLAANDILDYKDDDDKV
Tag:	C-Myc/DDK
Purity:	> 80% as determined by SDS-PAGE and Coomassie blue staining
Concentration:	>0.05 µg/µL as determined by microplate BCA method
Labeling Method:	Labeled with [U- ¹³ C ₆ , ¹⁵ N ₄]-L-Arginine and [U- ¹³ C ₆ , ¹⁵ N ₂]-L-Lysine
Buffer:	25 mM Tris-HCl, 100 mM glycine, pH 7.3
Storage:	Store at -80°C. Avoid repeated freeze-thaw cycles.
Stability:	Stable for 3 months from receipt of products under proper storage and handling conditions.
RefSeq:	<u>NP_005630</u>
RefSeq Size:	3244
RefSeq ORF:	1266
Synonyms:	BAGOS; P65; SVP65; SYT



[View online »](#)

Locus ID: 6857

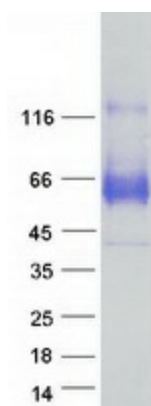
UniProt ID: [P21579](#), [A0A024RBE9](#)

Cytogenetics: 12q21.2

Summary: The synaptotagmins are integral membrane proteins of synaptic vesicles thought to serve as Ca²⁺ sensors in the process of vesicular trafficking and exocytosis. Calcium binding to synaptotagmin-1 participates in triggering neurotransmitter release at the synapse (Fernandez-Chacon et al., 2001 [PubMed 11242035]).[supplied by OMIM, Jul 2010]

Protein Families: Secreted Protein, Transmembrane

Product images:



Coomassie blue staining of purified SYT1 protein (Cat# [TP308938]). The protein was produced from HEK293T cells transfected with SYT1 cDNA clone (Cat# [RC208938]) using MegaTran 2.0 (Cat# [TT210002]).