

Product datasheet for PH308926

CUEDC1 (NM_017949) Human Mass Spec Standard

Product data:

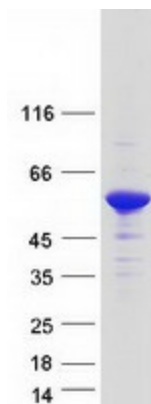
Product Type:	Mass Spec Standards
Description:	CUEDC1 MS Standard C13 and N15-labeled recombinant protein (NP_060419)
Species:	Human
Expression Host:	HEK293
Expression cDNA Clone or AA Sequence:	RC208926
Predicted MW:	42.3 kDa
Protein Sequence:	>RC208926 protein sequence Red=Cloning site Green=Tags(s)
	<p>MTSLFRRSSSGGGGTAGARGGGGTAAPQELNNSRPARQVRRLEFNQAMDDFKTMFPNMDYDIIIECVL RANSGAVDATIDQLLQMNLEGGSSGGVYEDSSSEDSIPPEILERTLEPDSSDEEPPPVYSPAYHMHV FDRPYPLAPPTPPRIDALGSGAPTSQRRYRNWNPPLLGNLPDDFLRILPQQLDSIQGNAGGPKPGSGEG CPPAMAGPGPGDQESRWKQYLEDERIALFLQNEEFMKELQRNRDFLLALERDLKYESQKSKSSSVAVGN DFGFSSPVPGTGDANPAVSEDALFRDKLKHMGKSTRRKL FELARAFSEKTKMRKSKRKHLLKHQSLGAAA STANLLDDVEGHACDEDFRGRREQEAPKVEEGLREGQ</p> <p>SGPTRTRPLEQKLI SEEDLAANDILDYKDDDDKV</p>
Tag:	C-Myc/DDK
Purity:	> 80% as determined by SDS-PAGE and Coomassie blue staining
Concentration:	>0.05 µg/µL as determined by microplate BCA method
Labeling Method:	Labeled with [U- ¹³ C ₆ , ¹⁵ N ₄]-L-Arginine and [U- ¹³ C ₆ , ¹⁵ N ₂]-L-Lysine
Buffer:	25 mM Tris-HCl, 100 mM glycine, pH 7.3
Storage:	Store at -80°C. Avoid repeated freeze-thaw cycles.
Stability:	Stable for 3 months from receipt of products under proper storage and handling conditions.
RefSeq:	<u>NP_060419</u>
RefSeq Size:	3638
RefSeq ORF:	1158
Synonyms:	DKFZp547L163; FLJ20739
Locus ID:	404093



[View online »](#)

UniProt ID: [Q9NWM3](#)
Cytogenetics: 17q22
Protein Families: Druggable Genome

Product images:



Coomassie blue staining of purified CUEDC1 protein (Cat# [TP308926]). The protein was produced from HEK293T cells transfected with CUEDC1 cDNA clone (Cat# [RC208926]) using MegaTran 2.0 (Cat# [TT210002]).