

Product datasheet for PH308919

ICAM3 (NM_002162) Human Mass Spec Standard

Product data:

Product Type:	Mass Spec Standards
Description:	ICAM3 MS Standard C13 and N15-labeled recombinant protein (NP_002153)
Species:	Human
Expression Host:	HEK293
Expression cDNA Clone or AA Sequence:	RC208919
Predicted MW:	59.5 kDa
Protein Sequence:	>RC208919 protein sequence Red=Cloning site Green=Tags(s)

MATMVPSVLWPRACWTLVCCLLTPGVQGEFLLRVEPQNPVLSAGGSLFVNCSTDCPSSEKIALETSLSKELVASGMGWAANL SNVTGNSRILCSVYCNGSQITGSSNITVYRLPERVELAPLPPWQPVGQNFNTRCQVEDGSPRTSLTVVLLRWEEELSRQPAVEEPAEVTATVLSRDDHGAPFSCRTELDMPQQLGLFVNTSAPRQLRTFVLPVTPPRLVAPRFLEVETSWPVDCTLDGLFPASEAQVYLALGDQMLNATVMNHGDTLTATATATARADQEGAREIVCNVTLGGERREARENLTVFSFLGPIVNLSEPTAHEGSTVTVSCMAGARVQVTLDGVPAAAPGQPAQLQLNATESDDGRSFFCSATLEVDGEFLHRNSSVQLRVLYGPKIDRATCPQHLKWKDKTRHVLQCQARGNPYPRLRCLKEGSSREVPVGIPFFVNVTHNGTYQCQASSRGKYTLVVMDIEAGSSHFVPVFAVLLTLGVVTIVLALMYVVFREHQRSYSYHVREESTYLPLTSMQPTEAMGEEPSRAE

TRTRPLEQKLI SEEDLAANDILDYKDDDDKV

Tag:	C-Myc/DDK
Purity:	> 80% as determined by SDS-PAGE and Coomassie blue staining
Concentration:	>0.05 µg/µL as determined by microplate BCA method
Labeling Method:	Labeled with [U- ¹³ C ₆ , ¹⁵ N ₄]-L-Arginine and [U- ¹³ C ₆ , ¹⁵ N ₂]-L-Lysine
Buffer:	25 mM Tris-HCl, 100 mM glycine, pH 7.3
Storage:	Store at -80°C. Avoid repeated freeze-thaw cycles.
Stability:	Stable for 3 months from receipt of products under proper storage and handling conditions.
RefSeq:	<u>NP_002153</u>
RefSeq Size:	1796
RefSeq ORF:	1641



[View online »](#)

Synonyms: CD50; CDW50; ICAM-R

Locus ID: 3385

UniProt ID: [P32942](#), [A0A024R7C1](#)

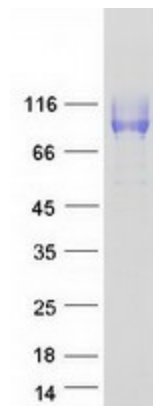
Cytogenetics: 19p13.2

Summary: The protein encoded by this gene is a member of the intercellular adhesion molecule (ICAM) family. All ICAM proteins are type I transmembrane glycoproteins, contain 2-9 immunoglobulin-like C2-type domains, and bind to the leukocyte adhesion LFA-1 protein. This protein is constitutively and abundantly expressed by all leucocytes and may be the most important ligand for LFA-1 in the initiation of the immune response. It functions not only as an adhesion molecule, but also as a potent signalling molecule. Alternative splicing results in multiple transcript variants encoding different isoforms. [provided by RefSeq, Feb 2016]

Protein Families: ES Cell Differentiation/IPS, Transmembrane

Protein Pathways: Cell adhesion molecules (CAMs)

Product images:



Coomassie blue staining of purified ICAM3 protein (Cat# [TP308919]). The protein was produced from HEK293T cells transfected with ICAM3 cDNA clone (Cat# [RC208919]) using MegaTran 2.0 (Cat# [TT210002]).