

Product datasheet for PH308917

MMP14 (NM_004995) Human Mass Spec Standard

Product data:

Product Type:	Mass Spec Standards
Description:	MMP14 MS Standard C13 and N15-labeled recombinant protein (NP_004986)
Species:	Human
Expression Host:	HEK293
Expression cDNA Clone or AA Sequence:	RC208917
Predicted MW:	65.89 kDa
Protein Sequence:	>RC208917 representing NM_004995 Red=Cloning site Green=Tags(s)

MSPAPRPPRCLLLPLLLTLGTALASLGSASQSSSFPEAWLQYGYLPPGDLRTHTRQSPQSLSAIIAAMQK
FYGLQVTGKADATMKAMRRPRCGVPDKFGAEIKANVRRKRYAIIQGLKWQHNEITFCIQNYTPKVGEYAT
YEAIRKAFRVWESATPLRFREVPYAYIREGHEKQADIMIFFAEGFHGDSTPFDGEGGFLAHAYFPGPNIG
GDTHFDSAEPWTVRNEIDLNGNDIFLVAVHELGHALGLEHSSDPSAIMAPFYQWMDTENFVLPDDRRGIQ
QLYGGESGFPTKMPPQPRTTSRPSVPDKPKNPTYGPNICDGNFDTVAMLRGEMFVKERWFWRVRRNNQVM
DGYPMPIGQFWRGLPASINTAYERKDGKVFVFKGDKHWVFDEASLEPGYPKHIKELGRGLPTDKIDAALF
WMPNGKTYFFRGNKYRFEELRAVDSEYPKNIKVWEGIPESPRGSFMGSDEVFTYFYKGNKYWKFNNQK
LKVEPGYPKSALRDWMGCPSSGGRPDEGTEETEVIIEVDEEGGAVSAAAVVLPVLLLLLVAVGLAVF
FFRRHGTPRRLLYCQRSLLDKV

TRTRPLEQKLISEEDLAANDILDYKDDDDKV

Tag:	C-Myc/DDK
Purity:	> 80% as determined by SDS-PAGE and Coomassie blue staining
Concentration:	>0.05 µg/µL as determined by microplate BCA method
Labeling Method:	Labeled with [U- 13C6, 15N4]-L-Arginine and [U- 13C6, 15N2]-L-Lysine
Buffer:	25 mM Tris-HCl, 100 mM glycine, pH 7.3
Storage:	Store at -80°C. Avoid repeated freeze-thaw cycles.
Stability:	Stable for 3 months from receipt of products under proper storage and handling conditions.
RefSeq:	<u>NP_004986</u>
RefSeq Size:	3558
RefSeq ORF:	1746



[View online »](#)

Synonyms: MMP-14; MMP-X1; MT-MMP; MT-MMP 1; MT1-MMP; MT1MMP; MTMMP1; WNCHRS

Locus ID: 4323

UniProt ID: [P50281](#)

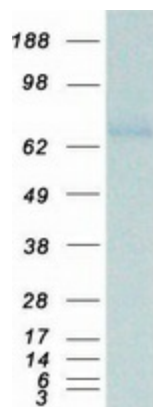
Cytogenetics: 14q11.2

Summary: Proteins of the matrix metalloproteinase (MMP) family are involved in the breakdown of extracellular matrix in normal physiological processes, such as embryonic development, reproduction, and tissue remodeling, as well as in disease processes, such as arthritis and metastasis. Most MMP's are secreted as inactive proproteins which are activated when cleaved by extracellular proteinases. However, the protein encoded by this gene is a member of the membrane-type MMP (MT-MMP) subfamily; each member of this subfamily contains a potential transmembrane domain suggesting that these proteins are expressed at the cell surface rather than secreted. This protein activates MMP2 protein, and this activity may be involved in tumor invasion. [provided by RefSeq, Jul 2008]

Protein Families: Druggable Genome, Protease, Transmembrane

Protein Pathways: GnRH signaling pathway

Product images:



Coomassie blue staining of purified MMP14 protein (Cat# [TP308917]). The protein was produced from HEK293T cells transfected with MMP14 cDNA clone (Cat# [RC208917]) using MegaTran 2.0 (Cat# [TT210002]).