

## Product datasheet for PH308885

### EMG1 (NM\_006331) Human Mass Spec Standard

#### Product data:

Product Type:	Mass Spec Standards
Description:	EMG1 MS Standard C13 and N15-labeled recombinant protein (NP_006322)
Species:	Human
Expression Host:	HEK293
Expression cDNA Clone or AA Sequence:	RC208885
Predicted MW:	26.7 kDa
Protein Sequence:	>RC208885 protein sequence Red=Cloning site Green=Tags(s)  MAAPSDGFKPRERSGGEQAQDWDALPPKRPRLGAGNKIGRRLIVVLEGASLETYKVGKTYELLNCDKHK SILLKNGRDPGEARPDITHQSLLMLMDSPLNRAGLLQVYIHTQKNVLIEVNPQTRIPRTFDRFCGLMVQL LHKLSVRAADGPKLLKVIKNPVSDFPVGCMKVGTSFSIPVVSVDVRELVPSSDPVVFVVGAFAGKYSV EYTEKMVSISNYPLSAALTCAKLTTAFEEVWGVI  TRTRPLEQKLISEEDLAANDILDYKDDDDKV
Tag:	C-Myc/DDK
Purity:	> 80% as determined by SDS-PAGE and Coomassie blue staining
Concentration:	>0.05 µg/µL as determined by microplate BCA method
Labeling Method:	Labeled with [U- <sup>13</sup> C <sub>6</sub> , <sup>15</sup> N <sub>4</sub> ]-L-Arginine and [U- <sup>13</sup> C <sub>6</sub> , <sup>15</sup> N <sub>2</sub> ]-L-Lysine
Buffer:	25 mM Tris-HCl, 100 mM glycine, pH 7.3
Storage:	Store at -80°C. Avoid repeated freeze-thaw cycles.
Stability:	Stable for 3 months from receipt of products under proper storage and handling conditions.
RefSeq:	<a href="#">NP_006322</a>
RefSeq Size:	1072
RefSeq ORF:	732
Synonyms:	C2F; Grcc2f; NEP1
Locus ID:	10436
UniProt ID:	<a href="#">Q92979</a>

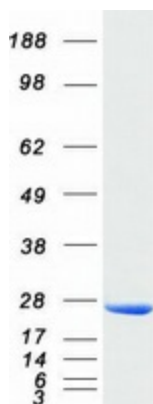


[View online »](#)

Cytogenetics: 12p13.31

**Summary:** This gene encodes an essential, conserved eukaryotic protein that methylates pseudouridine in 18S rRNA. The related protein in yeast is a component of the small subunit processome and is essential for biogenesis of the ribosomal 40S subunit. A mutation in this gene has been associated with Bowen-Conradi syndrome. Alternative splicing results in multiple transcript variants. [provided by RefSeq, Feb 2016]

### Product images:



Coomassie blue staining of purified EMG1 protein (Cat# [TP308885]). The protein was produced from HEK293T cells transfected with EMG1 cDNA clone (Cat# [RC208885]) using MegaTran 2.0 (Cat# [TT210002]).