

Product datasheet for PH308864

Vitamin D Binding protein (GC) (NM_000583) Human Mass Spec Standard

Product data:

Product Type:	Mass Spec Standards
Description:	GC MS Standard C13 and N15-labeled recombinant protein (NP_000574)
Species:	Human
Expression Host:	HEK293
Expression cDNA Clone or AA Sequence:	RC208864
Predicted MW:	52.9 kDa
Protein Sequence:	>RC208864 protein sequence Red=Cloning site Green=Tags(s)
	<p>MKRVLVLLLAVAFGHALERGRDYEKKNKVCKEFSLHGKEDFTSLSLVLYSRKFPSGTFEQVSQLVKEVVSL TEACCAEGADPDCYDTRTSALSAKSCESNSPFPVHPGTAECCTKEGLERKLCMAALKHQEQEFPTYVEPT NDEICEAFRKDPKEYANQFMWEYSTNYGQAPLSLLVSYTKSYLSMVGSCCTSASPTVCFLKERLQKHL LLTTLSNRVCSQYAAAYGEKKSRLSNLIKLAQKVPTADLEDVPLAEDITNILSKCCESASEDCMAKELPE HTVKLCDNLSTKNSKFEDCCQEKAMDVFCTYFMPAAQLPELPDVELPTNKDVCDPGNTKVMKDYTFEL SRRTHLPEVFLSKVLEPTLKSLGECCDVEDSTTCFNAKGPLLKELSSFIDKGQELCADYSENTFTEYKK KLAERLKAKLPDATPTELAKLVNKRSDFASNCCSINSPPLYCDSEIDAELKNIL</p> <p>TRTRPLEQKLISEEDLAANDILDYKDDDDKV</p>
Tag:	C-Myc/DDK
Purity:	> 80% as determined by SDS-PAGE and Coomassie blue staining
Concentration:	>0.05 µg/µL as determined by microplate BCA method
Labeling Method:	Labeled with [U- 13C6, 15N4]-L-Arginine and [U- 13C6, 15N2]-L-Lysine
Buffer:	25 mM Tris-HCl, 100 mM glycine, pH 7.3
Storage:	Store at -80°C. Avoid repeated freeze-thaw cycles.
Stability:	Stable for 3 months from receipt of products under proper storage and handling conditions.
RefSeq:	<u>NP_000574</u>
RefSeq Size:	2024
RefSeq ORF:	1422
Synonyms:	DBP; DBP-maf; DBP/GC; Gc-MAF; GcMAF; GRD3; HEL-S-51; VDB; VDBG; VDBP



[View online »](#)

Locus ID: 2638

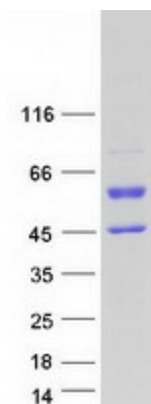
UniProt ID: [P02774](#)

Cytogenetics: 4q13.3

Summary: The protein encoded by this gene belongs to the albumin gene family. It is a multifunctional protein found in plasma, ascitic fluid, cerebrospinal fluid and on the surface of many cell types. It binds to vitamin D and its plasma metabolites and transports them to target tissues. Alternatively spliced transcript variants encoding different isoforms have been found for this gene.[provided by RefSeq, Feb 2011]

Protein Families: Secreted Protein

Product images:



Coomassie blue staining of purified GC protein (Cat# [TP308864]). The protein was produced from HEK293T cells transfected with GC cDNA clone (Cat# [RC208864]) using MegaTran 2.0 (Cat# [TT210002]).