

## Product datasheet for PH308863

### LYZL6 (NM\_020426) Human Mass Spec Standard

#### Product data:

Product Type:	Mass Spec Standards
Description:	LYZL6 MS Standard C13 and N15-labeled recombinant protein (NP_065159)
Species:	Human
Expression Host:	HEK293
Expression cDNA Clone or AA Sequence:	RC208863
Predicted MW:	17 kDa
Protein Sequence:	>RC208863 protein sequence Red=Cloning site Green=Tags(s)  MTKALLIYLVSSFLALNQASLISRCDLAQVLQLEDLDGFEGYSLSDWLCLAFVESKFNISKINENADGSF DYGLFQINSHYWCNDYKSYSENLCHVDCQDLLNPNLLAGIHCARIIVSGARGMNNWVEWRLHCSGRPLFY WLTGCRLR  TRTRPLEQKLISEEDLAANDILDYKDDDDKV
Tag:	C-Myc/DDK
Purity:	> 80% as determined by SDS-PAGE and Coomassie blue staining
Concentration:	>0.05 µg/µL as determined by microplate BCA method
Labeling Method:	Labeled with [U- 13C6, 15N4]-L-Arginine and [U- 13C6, 15N2]-L-Lysine
Buffer:	25 mM Tris-HCl, 100 mM glycine, pH 7.3
Storage:	Store at -80°C. Avoid repeated freeze-thaw cycles.
Stability:	Stable for 3 months from receipt of products under proper storage and handling conditions.
RefSeq:	<a href="#">NP_065159</a>
RefSeq Size:	942
RefSeq ORF:	444
Synonyms:	HEL-S-6a; LYC1; LYZB; PRO1485; TKAL754; UNQ754
Locus ID:	57151
UniProt ID:	<a href="#">O75951</a> , <a href="#">A0A080YUZ6</a>



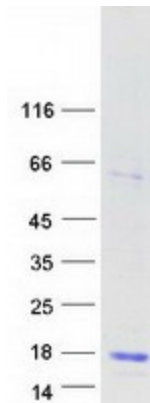
[View online »](#)

Cytogenetics: 17q12

**Summary:** This gene encodes a member of the C-type lysozyme/alpha-lactalbumin family. C-type lysozymes are bacteriolytic factors that play a role in host defense, whereas alpha-lactalbumins mediate lactose biosynthesis. The encoded protein contains catalytic residues characteristic of C-type lysozymes and may play a role in male reproduction. Alternatively spliced transcript variants have been observed for this gene. [provided by RefSeq, Jan 2011]

**Protein Families:** Secreted Protein

### Product images:



Coomassie blue staining of purified LYZL6 protein (Cat# [TP308863]). The protein was produced from HEK293T cells transfected with LYZL6 cDNA clone (Cat# [RC208863]) using MegaTran 2.0 (Cat# [TT210002]).