

Product datasheet for PH308857

HBQ1 (NM_005331) Human Mass Spec Standard

Product data:

Product Type:	Mass Spec Standards
Description:	HBQ1 MS Standard C13 and N15-labeled recombinant protein (NP_005322)
Species:	Human
Expression Host:	HEK293
Expression cDNA Clone or AA Sequence:	RC208857
Predicted MW:	15.5 kDa
Protein Sequence:	>RC208857 protein sequence Red=Cloning site Green=Tags(s) MALSAEDRALVRLWKKLGSNVGYTTEALERTFLAFPATKTYFSHLDLSPGSSQVRAHGQKVADALSLA VERLDDLPHALSALSHLHACQLRVDPASFQLLGHCLLVTLARHYPGDFSPALQASLDKFLSHVISALVSE YR TRPLEQKLISEEDLAANDILDYKDDDDKV
Tag:	C-Myc/DDK
Purity:	> 80% as determined by SDS-PAGE and Coomassie blue staining
Concentration:	>0.05 µg/µL as determined by microplate BCA method
Labeling Method:	Labeled with [U- ¹³ C ₆ , ¹⁵ N ₄]-L-Arginine and [U- ¹³ C ₆ , ¹⁵ N ₂]-L-Lysine
Buffer:	25 mM Tris-HCl, 100 mM glycine, pH 7.3
Storage:	Store at -80°C. Avoid repeated freeze-thaw cycles.
Stability:	Stable for 3 months from receipt of products under proper storage and handling conditions.
RefSeq:	NP_005322
RefSeq Size:	653
RefSeq ORF:	426
Synonyms:	HBQ
Locus ID:	3049
UniProt ID:	P09105 , A0A1K0GUV5

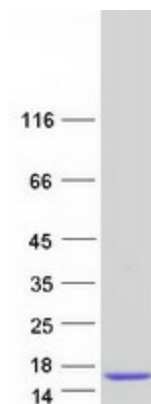


[View online »](#)

Cytogenetics: 16p13.3

Summary: Theta-globin mRNA is found in human fetal erythroid tissue but not in adult erythroid or other nonerythroid tissue. The theta-1 gene may be expressed very early in embryonic life, perhaps sometime before 5 weeks. Theta-1 is a member of the human alpha-globin gene cluster that involves five functional genes and two pseudogenes. The order of genes is: 5' - zeta - pseudozeta - mu - pseudoalpha-2 - pseudoalpha-1 - alpha-2 - alpha-1 - theta-1 - 3'. Research supports a transcriptionally active role for the gene and a functional role for the peptide in specific cells, possibly those of early erythroid tissue. [provided by RefSeq, Jul 2008]

Product images:



Coomassie blue staining of purified HBQ1 protein (Cat# [TP308857]). The protein was produced from HEK293T cells transfected with HBQ1 cDNA clone (Cat# [RC208857]) using MegaTran 2.0 (Cat# [TT210002]).