

## Product datasheet for PH308842

### CENPB (NM\_001810) Human Mass Spec Standard

#### Product data:

Product Type:	Mass Spec Standards
Description:	CENPB MS Standard C13 and N15-labeled recombinant protein (NP_001801)
Species:	Human
Expression Host:	HEK293
Expression cDNA Clone or AA Sequence:	RC208842
Predicted MW:	65.2 kDa
Protein Sequence:	>RC208842 protein sequence Red=Cloning site Green=Tags(s)

MGPKRRQLTFREKSRIIQEVEENPDLRKGEIARRFNIPPSTLSTILKNKRAILASERKYGVASTCRKTNK  
LSPYDKLEGLLI AWFQQIRAAGLPVKGIILKEKALRIAEELGMDDFTASNGWLD RFRRRHGVVSCSGVAR  
ARARNAAPRTPAAPASPAAVPSEGSGGTTGWRAREEQPPSVAEGYASQDVFSATETSLWYDFLPDQAAG  
LCGGDGRPRQATQRLSVLLCANADGSEKLPPLVAGKSAKPRAGQAGLPCDYTANSKGGVTTQALAKYLKA  
LDTRMAAESRRVLLLAGRLAAQSLDTSGLRHVQLAFFPPGTVHPLERGVVQVKGHYRQAMLLKAMAAL  
EQDPSGLQLGLTEALHFVAAAWQAVEPSDIAACFREAGFGGGPNATITTSLKSEGE EEEEEEEEEEE  
EGEEEEEGEEEEEGEELGEEEEVEEEDVDSDEEEEEDEESSSEGLEAEDWAQGVVEAGGSFGAY  
GAQEEAQPTLHFLEGGEDSDSDEEEDDEEDEDDEDDDDDEEDGDEVVPSFGEAMAYFAMVKRYLTS  
FPIDDRVQSHILHLEHDLVHVTRKNHARQAGVRGLGHQS

TRTRPLEQKLISEEDLAANDILDYKDDDDKV

Tag:	C-Myc/DDK
Purity:	> 80% as determined by SDS-PAGE and Coomassie blue staining
Concentration:	>0.05 µg/µL as determined by microplate BCA method
Labeling Method:	Labeled with [U- 13C6, 15N4]-L-Arginine and [U- 13C6, 15N2]-L-Lysine
Buffer:	25 mM Tris-HCl, 100 mM glycine, pH 7.3
Storage:	Store at -80°C. Avoid repeated freeze-thaw cycles.
Stability:	Stable for 3 months from receipt of products under proper storage and handling conditions.
RefSeq:	<u><a href="#">NP_001801</a></u>
RefSeq Size:	2856
RefSeq ORF:	1797



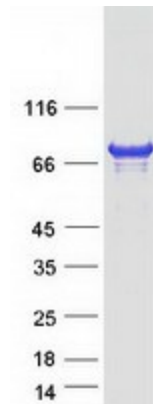
[View online »](#)

Locus ID: 1059  
UniProt ID: [P07199](#)  
Cytogenetics: 20p13

**Summary:** This gene product is a highly conserved protein that facilitates centromere formation. It is a DNA-binding protein that is derived from transposases of the pogo DNA transposon family. It contains a helix-loop-helix DNA binding motif at the N-terminus, and a dimerization domain at the C-terminus. The DNA binding domain recognizes and binds a 17-bp sequence (CENP-B box) in the centromeric alpha satellite DNA. This protein is proposed to play an important role in the assembly of specific centromere structures in interphase nuclei and on mitotic chromosomes. It is also considered a major centromere autoantigen recognized by sera from patients with anti-centromere antibodies. [provided by RefSeq, Jul 2008]

**Protein Families:** Druggable Genome

### Product images:



Coomassie blue staining of purified CENPB protein (Cat# [TP308842]). The protein was produced from HEK293T cells transfected with CENPB cDNA clone (Cat# [RC208842]) using MegaTran 2.0 (Cat# [TT210002]).