

Product datasheet for PH308833

HOXC9 (NM_006897) Human Mass Spec Standard

Product data:

Product Type:	Mass Spec Standards
Description:	HOXC9 MS Standard C13 and N15-labeled recombinant protein (NP_008828)
Species:	Human
Expression Host:	HEK293
Expression cDNA Clone or AA Sequence:	RC208833
Predicted MW:	29.2 kDa
Protein Sequence:	>RC208833 protein sequence Red=Cloning site Green=Tags(s) MSATGPISNYYVDSLISHDNEDLLASRFPATGAHPAAARPSGLVPDCSDFPSCSFAPKPAVFSTSWAPVP SQSSVYHPYGPQPHLGADTRYMRTWLEPLSGAVSFPSFPAGGRHYALKPDAYPGRRADCGPGEGRSYDP YMYGSPGELRDRAPQTLPSPEADALAGSKHKEEKADLDPSNPVANWIHARSTRKKRCPYTKYQTLLEKE FLFNMYLTRRRYEVARVLNLTERRQVKIWFQNRMMKMKMKEKTDKEQS TRTRPLEQKLISEEDLAANDILDYKDDDDKV
Tag:	C-Myc/DDK
Purity:	> 80% as determined by SDS-PAGE and Coomassie blue staining
Concentration:	>0.05 µg/µL as determined by microplate BCA method
Labeling Method:	Labeled with [U- 13C6, 15N4]-L-Arginine and [U- 13C6, 15N2]-L-Lysine
Buffer:	25 mM Tris-HCl, 100 mM glycine, pH 7.3
Storage:	Store at -80°C. Avoid repeated freeze-thaw cycles.
Stability:	Stable for 3 months from receipt of products under proper storage and handling conditions.
RefSeq:	NP_008828
RefSeq Size:	1640
RefSeq ORF:	780
Synonyms:	HOX3; HOX3B
Locus ID:	3225
UniProt ID:	P31274 , A0A024RAZ6



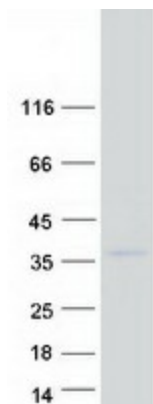
[View online »](#)

Cytogenetics: 12q13.13

Summary: This gene belongs to the homeobox family of genes. The homeobox genes encode a highly conserved family of transcription factors that play an important role in morphogenesis in all multicellular organisms. Mammals possess four similar homeobox gene clusters, HOXA, HOXB, HOXC and HOXD, which are located on different chromosomes and consist of 9 to 11 genes arranged in tandem. This gene is one of several homeobox HOXC genes located in a cluster on chromosome 12. [provided by RefSeq, Jul 2008]

Protein Families: Transcription Factors

Product images:



Coomassie blue staining of purified HOXC9 protein (Cat# [TP308833]). The protein was produced from HEK293T cells transfected with HOXC9 cDNA clone (Cat# [RC208833]) using MegaTran 2.0 (Cat# [TT210002]).