

## Product datasheet for PH308812

### SRGAP1 (NM\_020762) Human Mass Spec Standard

#### Product data:

Product Type:	Mass Spec Standards
Description:	SRGAP1 MS Standard C13 and N15-labeled recombinant protein (NP_065813)
Species:	Human
Expression Host:	HEK293
Expression cDNA Clone or AA Sequence:	RC208812
Predicted MW:	124.3 kDa
Protein Sequence:	>RC208812 protein sequence Red=Cloning site Green=Tags(s)

MSTPSRFKKDKKEIIAEYESQVKEIRAQLVEQQKCLEQQTEMRVQLQLDQLQDFFRKKAIEIETEYSRNLEKL  
AERFMAKTRSTKDHQQYKQDQNLSPVNCWYLLLNQVRRESKDHAATLSDIYLNNAVIMRFMQISEDSTRMF  
KKSKEIAFQLHEDLMKVLNELYVMKTYHMYHAESISAESKLKEAEKQEEKQIGRSGDPVFHIRLEERHQ  
RRSSVKKIEKMKERQAKYSENKLSIKARNEYLLTLEATNASVFYKYYIHDLSIDLCCDLGYHASLNRA  
LRTYLSAEYNLETSRHEGLDIIENAVDNLEPRSDKQRFMEMYPAAFPPMKFEFQSHMGDEVCSAQQP  
VQAEMLRYQQLQSRLATLKIENEEVKTTTEATLQTIQDMVTIEDYDVSECFQHSRSTESVKSTVSETYL  
SKPSIAKRANQQETEQFYFMKLREYLEGSNLITKLQAKHDLLQRTLGEHRAEYMTTRPPNVPPKPKQH  
RKSRRSQYNTKLFNGDLETFVKDSGQVIPLIVESCIRFINLYGLQHGGIFRVSGSQVEVNDIKNSFERG  
ENPLADDQSNHDINSVAGVLKLYFRGLENPLFPKERFNDLISCIKIDNLYERALHIRKLLTLPRSVLIV  
MRYLFAFLNHL SQYSDENMMDPYNLAICFGPTLMPVPEIQDQVSCQAHVNEI IKTIIHHETIFPDAKEL  
DGPVYEKCMAGDDYCDSPYSEHGTL EEVDQDAGTEPHTSEDECEPIEAIKFDYVGRSARELSFKKGASL  
LLYHRASEDWWEGRHNGIDGLVPHQYIVVQDMDDTFSDTL SQKADSEASSGPVTEDEKSSSKDMNSPTDRH  
PDGYLARQRKRGEP PPPVRRPGRTSDGHCPLHPPHALSNSSVDLGSPSLASHPRGLLQNRGLNNDSPERR  
RRPGHGSLTNI SRHDSLKIDSPPIRRSTSSGQYTFGNDHKPLDPETIAQDIEETMNTALNELRELERQS  
TAKHAPDVVLDTLEQVKNSTPATSTESL SPLHNVALRSSEPQIRRSTSSSSDSTMSTFKPMVAPRMGVQL  
KPPALRPKPAVLPKTNPTIGPAPPPQGPDKSCTM

TRTRPLEQKLISEEDLAANDILDYKDDDDKV

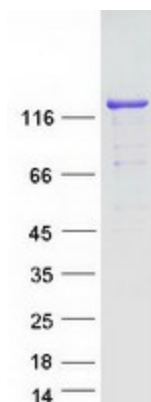
Tag:	C-Myc/DDK
Purity:	> 80% as determined by SDS-PAGE and Coomassie blue staining
Concentration:	>0.05 µg/µL as determined by microplate BCA method
Labeling Method:	Labeled with [U- <sup>13</sup> C <sub>6</sub> , <sup>15</sup> N <sub>4</sub> ]-L-Arginine and [U- <sup>13</sup> C <sub>6</sub> , <sup>15</sup> N <sub>2</sub> ]-L-Lysine
Buffer:	25 mM Tris-HCl, 100 mM glycine, pH 7.3



[View online »](#)

<b>Storage:</b>	Store at -80°C. Avoid repeated freeze-thaw cycles.
<b>Stability:</b>	Stable for 3 months from receipt of products under proper storage and handling conditions.
<b>RefSeq:</b>	<a href="#">NP_065813</a>
<b>RefSeq Size:</b>	8475
<b>RefSeq ORF:</b>	3255
<b>Synonyms:</b>	ARHGAP13; NMTC2
<b>Locus ID:</b>	57522
<b>UniProt ID:</b>	<a href="#">Q7Z6B7</a>
<b>Cytogenetics:</b>	12q14.2
<b>Summary:</b>	The protein encoded by this gene is a GTPase activator, working with the GTPase CDC42 to negatively regulate neuronal migration. The encoded protein interacts with the transmembrane receptor ROBO1 to inactivate CDC42. [provided by RefSeq, Sep 2016]
<b>Protein Pathways:</b>	Axon guidance

### Product images:



Coomassie blue staining of purified SRGAP1 protein (Cat# [TP308812]). The protein was produced from HEK293T cells transfected with SRGAP1 cDNA clone (Cat# [RC208812]) using MegaTran 2.0 (Cat# [TT210002]).