

Product datasheet for PH308801

CMC1 (NM_182523) Human Mass Spec Standard

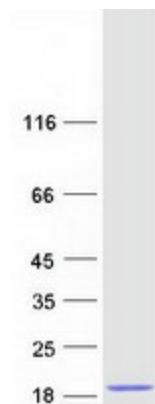
Product data:

Product Type:	Mass Spec Standards
Description:	CMC1 MS Standard C13 and N15-labeled recombinant protein (NP_872329)
Species:	Human
Expression Host:	HEK293
Expression cDNA Clone or AA Sequence:	RC208801
Predicted MW:	12.5 kDa
Protein Sequence:	<p>>RC208801 protein sequence</p> <p>Red=Cloning site Green=Tags(s)</p> <p>MALDPADQHLRHVEKDVLIIPKIMREKAKERCSEQVQDFTKCKKNSGVLMVVKCRKENSALKECLTAYYND PAFYEECKMEYLKEREFRKTGIPTKKRLQKLPTSM</p> <p>TRTRPLEQKLISEEDLAANDILDYKDDDDKV</p>
Tag:	C-Myc/DDK
Purity:	> 80% as determined by SDS-PAGE and Coomassie blue staining
Concentration:	>0.05 µg/µL as determined by microplate BCA method
Labeling Method:	Labeled with [U- 13C6, 15N4]-L-Arginine and [U- 13C6, 15N2]-L-Lysine
Buffer:	25 mM Tris-HCl, 100 mM glycine, pH 7.3
Storage:	Store at -80°C. Avoid repeated freeze-thaw cycles.
Stability:	Stable for 3 months from receipt of products under proper storage and handling conditions.
RefSeq:	NP_872329
RefSeq Size:	640
RefSeq ORF:	318
Synonyms:	C3orf68
Locus ID:	152100
UniProt ID:	Q7Z7K0
Cytogenetics:	3p24.1


[View online »](#)

Summary:

Component of the MITRAC (mitochondrial translation regulation assembly intermediate of cytochrome c oxidase complex) complex, that regulates cytochrome c oxidase assembly. [UniProtKB/Swiss-Prot Function]

Product images:


Coomassie blue staining of purified CMC1 protein (Cat# [TP308801]). The protein was produced from HEK293T cells transfected with CMC1 cDNA clone (Cat# [RC208801]) using MegaTran 2.0 (Cat# [TT210002]).