

Product datasheet for PH308780

UBE2L3 (NM_003347) Human Mass Spec Standard

Product data:

Product Type:	Mass Spec Standards
Description:	UBE2L3 MS Standard C13 and N15-labeled recombinant protein (NP_003338)
Species:	Human
Expression Host:	HEK293
Expression cDNA Clone or AA Sequence:	RC208780
Predicted MW:	17.9 kDa
Protein Sequence:	>RC208780 protein sequence Red =Cloning site Green =Tags(s) MAASRRLMKELEEIRKCGMKNFRNIQVDEANLLTWQGLIVPDNPPYDKGAFRIEINFPAEYFPKPPKITF KTKIYHPNIDEKGQVCLPVISAEWKPATKTDQVIQSLIALVNDPQPEHPLRADLAEYSKDRKFKCKNA EEFTKKYGEKRPVD TR TRPLEQKLI SEEDLAANDILDYKDDDDKV
Tag:	C-Myc/DDK
Purity:	> 80% as determined by SDS-PAGE and Coomassie blue staining
Concentration:	>0.05 µg/µL as determined by microplate BCA method
Labeling Method:	Labeled with [U- 13C6, 15N4]-L-Arginine and [U- 13C6, 15N2]-L-Lysine
Buffer:	25 mM Tris-HCl, 100 mM glycine, pH 7.3
Storage:	Store at -80°C. Avoid repeated freeze-thaw cycles.
Stability:	Stable for 3 months from receipt of products under proper storage and handling conditions.
RefSeq:	NP_003338
RefSeq Size:	3028
RefSeq ORF:	462
Synonyms:	E2-F1; L-UBC; UBCH7; UbcM4
Locus ID:	7332
UniProt ID:	P68036 , A0A024R1A4



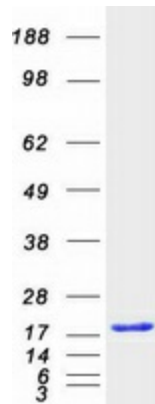
[View online »](#)

Cytogenetics: 22q11.21

Summary: The modification of proteins with ubiquitin is an important cellular mechanism for targeting abnormal or short-lived proteins for degradation. Ubiquitination involves at least three classes of enzymes: ubiquitin-activating enzymes (E1s), ubiquitin-conjugating enzymes (E2s) and ubiquitin-protein ligases (E3s). This gene encodes a member of the E2 ubiquitin-conjugating enzyme family. This enzyme is demonstrated to participate in the ubiquitination of p53, c-Fos, and the NF- κ B precursor p105 in vitro. Several alternatively spliced transcript variants have been found for this gene. [provided by RefSeq, Sep 2009]

Protein Pathways: Parkinson's disease, Ubiquitin mediated proteolysis

Product images:



Coomassie blue staining of purified UBE2L3 protein (Cat# [TP308780]). The protein was produced from HEK293T cells transfected with UBE2L3 cDNA clone (Cat# [RC208780]) using MegaTran 2.0 (Cat# [TT210002]).