

Product datasheet for PH308758

LIN7C (NM_018362) Human Mass Spec Standard

Product data:

| | |
|---------------------------------------|---|
| Product Type: | Mass Spec Standards |
| Description: | LIN7C MS Standard C13 and N15-labeled recombinant protein (NP_060832) |
| Species: | Human |
| Expression Host: | HEK293 |
| Expression cDNA Clone or AA Sequence: | RC208758 |
| Predicted MW: | 21.7 kDa |
| Protein Sequence: | <p>>RC208758 representing NM_018362</p> <p>Red=Cloning site Green=Tags(s)</p> <p>MAALGEPVRLERDICRAIELLEKLQRSGEVPPQKLQALQRLQSEFCNAVREYEHVYETVDISSSPEVR ANATAKATVAFAASEGSHPRVVELPKTEEGLGFNIMGKEQNSPIYISRIIPGGIADRHGGLKRGDQL LSVNGVSVEGEHHEKAVELLKAAQGKVKLVVRYTPKVLEEMESRFEKMRSARRRQQT</p> <p>TRTRPLEQKLISEEDLAANDILDYKDDDDKV</p> |
| Tag: | C-Myc/DDK |
| Purity: | > 80% as determined by SDS-PAGE and Coomassie blue staining |
| Concentration: | >0.05 µg/µL as determined by microplate BCA method |
| Labeling Method: | Labeled with [U- ¹³ C ₆ , ¹⁵ N ₄]-L-Arginine and [U- ¹³ C ₆ , ¹⁵ N ₂]-L-Lysine |
| Buffer: | 25 mM Tris-HCl, 100 mM glycine, pH 7.3 |
| Storage: | Store at -80°C. Avoid repeated freeze-thaw cycles. |
| Stability: | Stable for 3 months from receipt of products under proper storage and handling conditions. |
| RefSeq: | <u>NP_060832</u> |
| RefSeq Size: | 4729 |
| RefSeq ORF: | 591 |
| Synonyms: | LIN-7-C; LIN-7C; MALS-3; MALS3; VELI3 |
| Locus ID: | 55327 |
| UniProt ID: | <u>Q9NUP9</u> |

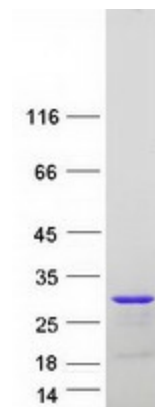

[View online »](#)

Cytogenetics: 11p14.1

Summary: Plays a role in establishing and maintaining the asymmetric distribution of channels and receptors at the plasma membrane of polarized cells. Forms membrane-associated multiprotein complexes that may regulate delivery and recycling of proteins to the correct membrane domains. The tripartite complex composed of LIN7 (LIN7A, LIN7B or LIN7C), CASK and APBA1 may have the potential to couple synaptic vesicle exocytosis to cell adhesion in brain. Ensures the proper localization of GRIN2B (subunit 2B of the NMDA receptor) to neuronal postsynaptic density and may function in localizing synaptic vesicles at synapses where it is recruited by beta-catenin and cadherin. Required to localize Kir2 channels, GABA transporter (SLC6A12) and EGFR/ERBB1, ERBB2, ERBB3 and ERBB4 to the basolateral membrane of epithelial cells.[UniProtKB/Swiss-Prot Function]

Protein Families: Druggable Genome

Product images:



Coomassie blue staining of purified LIN7C protein (Cat# [TP308758]). The protein was produced from HEK293T cells transfected with LIN7C cDNA clone (Cat# [RC208758]) using MegaTran 2.0 (Cat# [TT210002]).