

Product datasheet for PH308750

Glutathione S Transferase alpha 1 (GSTA1) (NM_145740) Human Mass Spec Standard

Product data:

Product Type:	Mass Spec Standards
Description:	GSTA1 MS Standard C13 and N15-labeled recombinant protein (NP_665683)
Species:	Human
Expression Host:	HEK293
Expression cDNA Clone or AA Sequence:	RC208750
Predicted MW:	25.6 kDa
Protein Sequence:	>RC208750 protein sequence Red=Cloning site Green=Tags(s) MAEKPKLHYFNARGRMESTRWLLAAAGVEFEEKFIKSAEDLDKLRNDGYLMFQQVPMVEIDGMKLVQTRA ILNYIASKYNLYGKDIKERALIDMYIEGIADLGEMILLPVCPPPEEKDAKLALIKEIKNRYFPAFEKVL KSHGQDYLVGNKLSRADIHLVELLYVEELDSSLISSFPLLKALKTRISNLPVKKFLQPGSPRKPPMDE KSLEEARKIFRF TRTRPLEQKLI SEEDLAANDILDYKDDDDKV
Tag:	C-Myc/DDK
Purity:	> 80% as determined by SDS-PAGE and Coomassie blue staining
Concentration:	>0.05 µg/µL as determined by microplate BCA method
Labeling Method:	Labeled with [U- ¹³ C ₆ , ¹⁵ N ₄]-L-Arginine and [U- ¹³ C ₆ , ¹⁵ N ₂]-L-Lysine
Buffer:	25 mM Tris-HCl, 100 mM glycine, pH 7.3
Storage:	Store at -80°C. Avoid repeated freeze-thaw cycles.
Stability:	Stable for 3 months from receipt of products under proper storage and handling conditions.
RefSeq:	NP_665683
RefSeq Size:	1276
RefSeq ORF:	666
Synonyms:	GST-epsilon; GST2; GSTA1-1; GTH1
Locus ID:	2938
UniProt ID:	P08263 , A0A140VJK4



[View online »](#)

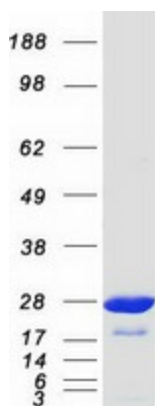
Cytogenetics: 6p12.2

Summary: This gene encodes a member of a family of enzymes that function to add glutathione to target electrophilic compounds, including carcinogens, therapeutic drugs, environmental toxins, and products of oxidative stress. This action is an important step in detoxification of these compounds. This subfamily of enzymes has a particular role in protecting cells from reactive oxygen species and the products of peroxidation. Polymorphisms in this gene influence the ability of individuals to metabolize different drugs. This gene is located in a cluster of similar genes and pseudogenes on chromosome 6. Alternative splicing results in multiple transcript variants. [provided by RefSeq, Jan 2016]

Protein Families: Druggable Genome

Protein Pathways: Drug metabolism - cytochrome P450, Glutathione metabolism, Metabolism of xenobiotics by cytochrome P450

Product images:



Coomassie blue staining of purified GSTA1 protein (Cat# [TP308750]). The protein was produced from HEK293T cells transfected with GSTA1 cDNA clone (Cat# [RC208750]) using MegaTran 2.0 (Cat# [TT210002]).