

Product datasheet for PH308749

SMAD3 (NM_005902) Human Mass Spec Standard

Product data:

Product Type:	Mass Spec Standards
Description:	SMAD3 MS Standard C13 and N15-labeled recombinant protein (NP_005893)
Species:	Human
Expression Host:	HEK293
Expression cDNA Clone or AA Sequence:	RC208749
Predicted MW:	47.9 kDa
Protein Sequence:	>RC208749 representing NM_005902 Red=Cloning site Green=Tags(s)
	MSSILPFTPIVKRLLGWKKGEQNGQEEKWCEKAVKSLVKLKKKTGQLDELEKAITTQNVNTKCITIPRS LDGRLQVSHRKGLPHVIYCRLWRWPDLSHHELRAMELCEFAFNMKKDEVCVNPYHYQRVETPVLPPVLV PRHTEIPAEEFPLDDYSHSIPENTNFPAGIEPQSNIPETPPPGYLSHGDSHDMHSDAGSPNLSPN PMSPAHNLDLQPVTYCEPAFWCSISYELNQRVGETFHASQPSMTVDGFTDPSNSERFCLGLLSNVNRN AAVELTRRHIGRVRLYYIGGEVFAECLSDSAIFVQSPNCNQRVYGHWPATVCKIPPGCNLKFNNQEFAA LLAQSVNQGFEAVYQLTRMCTIRMSFVKGWGAERYRQVTSTPCWIELHLNGLQWLDKVLTMGSPSIR CSSVS
	TRTRPLEQKLISEEDLAANDILDYKDDDDKV
Tag:	C-Myc/DDK
Purity:	> 80% as determined by SDS-PAGE and Coomassie blue staining
Concentration:	>0.05 µg/µL as determined by microplate BCA method
Labeling Method:	Labeled with [U- 13C6, 15N4]-L-Arginine and [U- 13C6, 15N2]-L-Lysine
Buffer:	25 mM Tris-HCl, 100 mM glycine, pH 7.3
Storage:	Store at -80°C. Avoid repeated freeze-thaw cycles.
Stability:	Stable for 3 months from receipt of products under proper storage and handling conditions.
RefSeq:	NP_005893
RefSeq Size:	6256
RefSeq ORF:	1275
Synonyms:	HSPC193; HsT17436; JV15-2; LDS1C; LDS3; MADH3



[View online »](#)

Locus ID: 4088

UniProt ID: [P84022](#), [A0A024R5Z3](#), [Q9P0T0](#)

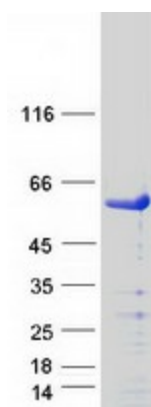
Cytogenetics: 15q22.33

Summary: The SMAD family of proteins are a group of intracellular signal transducer proteins similar to the gene products of the Drosophila gene 'mothers against decapentaplegic' (Mad) and the C. elegans gene Sma. The SMAD3 protein functions in the transforming growth factor-beta signaling pathway, and transmits signals from the cell surface to the nucleus, regulating gene activity and cell proliferation. It also functions as a tumor suppressor. Mutations in this gene are associated with aneurysms-osteoarthritis syndrome and Loews-Dietz Syndrome 3. [provided by RefSeq, Nov 2019]

Protein Families: Cancer stem cells, Druggable Genome, Embryonic stem cells, ES Cell Differentiation/IPS, Stem cell relevant signaling - JAK/STAT signaling pathway, Stem cell relevant signaling - TGFb/BMP signaling pathway, Transcription Factors

Protein Pathways: Adherens junction, Cell cycle, Chronic myeloid leukemia, Colorectal cancer, Pancreatic cancer, Pathways in cancer, TGF-beta signaling pathway, Wnt signaling pathway

Product images:



Coomassie blue staining of purified SMAD3 protein (Cat# [TP308749]). The protein was produced from HEK293T cells transfected with SMAD3 cDNA clone (Cat# [RC208749]) using MegaTran 2.0 (Cat# [TT210002]).