

Product datasheet for PH308746

Ribonuclease T2 (RNASET2) (NM_003730) Human Mass Spec Standard

Product data:

Product Type:	Mass Spec Standards
Description:	RNASET2 MS Standard C13 and N15-labeled recombinant protein (NP_003721)
Species:	Human
Expression Host:	HEK293
Expression cDNA Clone or AA Sequence:	RC208746
Predicted MW:	29.5 kDa
Protein Sequence:	>RC208746 protein sequence Red=Cloning site Green=Tags(s) MRPAALRGALLGCLCLALLCLGGADKRLRDNHEWKKLIMVQHPETVCEKIQNDCRDPDPDYWTIHGLWPD KSEGCNRSWPFNLEEIKDLLPEMRAYWPDVIHSFPNRSRFWKHEWEKHGTCAAQVDALNSQKKYFGRSLE LYRELDLNSVLLKLGIKPSINYYQVADFKDALARYGVIPKIQCLPPSQDEEVQTIQIQLCLTKQDQQL QNCTEPGEQPSPKQEVWLANGAAESRGLRVCEGDPVFYPPPKTKH TRTRPLEQKLI SEEDLAANDILDYKDDDDKV
Tag:	C-Myc/DDK
Purity:	> 80% as determined by SDS-PAGE and Coomassie blue staining
Concentration:	>0.05 µg/µL as determined by microplate BCA method
Labeling Method:	Labeled with [U- 13C6, 15N4]-L-Arginine and [U- 13C6, 15N2]-L-Lysine
Buffer:	25 mM Tris-HCl, 100 mM glycine, pH 7.3
Storage:	Store at -80°C. Avoid repeated freeze-thaw cycles.
Stability:	Stable for 3 months from receipt of products under proper storage and handling conditions.
RefSeq:	NP_003721
RefSeq Size:	1250
RefSeq ORF:	768
Synonyms:	bA514O12.3; RNASE6PL
Locus ID:	8635
UniProt ID:	O00584



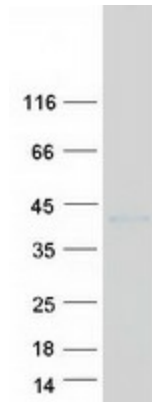
[View online »](#)

Cytogenetics: 6q27

Summary: This ribonuclease gene is a novel member of the Rh/T2/S-glycoprotein class of extracellular ribonucleases. It is a single copy gene that maps to 6q27, a region associated with human malignancies and chromosomal rearrangement. [provided by RefSeq, Jul 2008]

Protein Families: Secreted Protein

Product images:



Coomassie blue staining of purified RNASET2 protein (Cat# [TP308746]). The protein was produced from HEK293T cells transfected with RNASET2 cDNA clone (Cat# [RC208746]) using MegaTran 2.0 (Cat# [TT210002]).