

Product datasheet for PH308737

GLUD2 (NM_012084) Human Mass Spec Standard

Product data:

Product Type:	Mass Spec Standards
Description:	GLUD2 MS Standard C13 and N15-labeled recombinant protein (NP_036216)
Species:	Human
Expression Host:	HEK293
Expression cDNA Clone or AA Sequence:	RC208737
Predicted MW:	61.4 kDa
Protein Sequence:	>RC208737 protein sequence Red=Cloning site Green=Tags(s)

MYRYLAKALLPSRAGPAALGSAANHSAALLGRGRGQPAASQPGLALAARRHYSELVADREDDPNFFKMV
EGFFDRGASIVEDKLVKDLRTQESEEQKRNRVRGILRIIKPCNHVLSLSPFIRRDDGSWEVIEGYRAQHS
QHRTPCGGIRYSTDVSVEVKALASLMTYKCAVVDVPPFGGAKAGVKINPKNYTENELEKITRRFTMELA
KKGFIPGVDVPAPDMNTGEREMSWIADTYASTIGHYDINAHACVTGKPI SQGGIHGRISATGRGVFHGI
ENFINEASYMSILGMTPGFRDKTFFVQGFVGLHSMRYLHRFGAKCIAVGESDGSIWNPDGIDPKELED
FKLQHGSI LGFPKAKPYEGSILEVDCDILIPAATEKQLTKSNAPRVKAKIIAEGANGPTTPEADKIFLER
NILVIPDLYLNAGGVTVSYFEWLKLNHVSYGRLTFKYERDSNYHLLL SVQESLERKFGKHGGTIPIVPT
AEFQDSISGASEKDIVHSALAYTMERSARQIMHTAMKYNLGLDLRTAAYVNAIEKVKVYSEAGVTFT

TRTRPLEQKLI SEEDLAANDILDYKDDDDKV

Tag:	C-Myc/DDK
Purity:	> 80% as determined by SDS-PAGE and Coomassie blue staining
Concentration:	>0.05 µg/µL as determined by microplate BCA method
Labeling Method:	Labeled with [U- ¹³ C ₆ , ¹⁵ N ₄]-L-Arginine and [U- ¹³ C ₆ , ¹⁵ N ₂]-L-Lysine
Buffer:	25 mM Tris-HCl, 100 mM glycine, pH 7.3
Storage:	Store at -80°C. Avoid repeated freeze-thaw cycles.
Stability:	Stable for 3 months from receipt of products under proper storage and handling conditions.
RefSeq:	<u>NP_036216</u>
RefSeq Size:	2348
RefSeq ORF:	1674



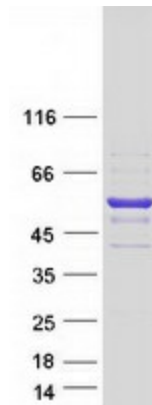
[View online »](#)

Synonyms: GDH2; GLUDP1
Locus ID: 2747
UniProt ID: [P49448](#), [A0A140VK14](#)
Cytogenetics: Xq24

Summary: The protein encoded by this gene is localized to the mitochondrion and acts as a homohexamer to recycle glutamate during neurotransmission. The encoded enzyme catalyzes the reversible oxidative deamination of glutamate to alpha-ketoglutarate. This gene is intronless.[provided by RefSeq, Jan 2010]

Protein Pathways: Alanine, aspartate and glutamate metabolism, Arginine and proline metabolism, D-Glutamine and D-glutamate metabolism, Metabolic pathways, Nitrogen metabolism

Product images:



Coomassie blue staining of purified GLUD2 protein (Cat# [TP308737]). The protein was produced from HEK293T cells transfected with GLUD2 cDNA clone (Cat# [RC208737]) using MegaTran 2.0 (Cat# [TT210002]).