

## Product datasheet for PH308728

### VASH1 (NM\_014909) Human Mass Spec Standard

#### Product data:

Product Type:	Mass Spec Standards
Description:	VASH1 MS Standard C13 and N15-labeled recombinant protein (NP_055724)
Species:	Human
Expression Host:	HEK293
Expression cDNA Clone or AA Sequence:	RC208728
Predicted MW:	41 kDa
Protein Sequence:	>RC208728 protein sequence <span style="color: red;">Red</span> =Cloning site <span style="color: green;">Green</span> =Tags(s)

MPGGKKVAGGGSSGATPTSAAATAPSGVRRLETSEGTSARDEEPEEEGEDLRDGGVPFFVNRGGLPVD  
 EATWERMWKHVAKIHPDGEKVAQRIRGATDLPKIPISVPTFQPSTPVPERLEAVQRYIRELQYNHTGTQ  
 FFEIKKSRPLTGLMDLAKEMTKEALPIKCLEAVILGIYLTNSMPTLERFPISEFKTYFSGNYFRHIVLGVN  
 FAGRYGALGMSRREDLMYKPPAFRTLSELVLDFAAYGRCWHVLKKVKLGQSVSHDPSVEQIEWKHSVL  
 DVERLGRDDFRKELERHARDMLKIGKGTGPPSPTKDRKKDVSSPQRAQSSPHRRNSRERRPSGDKKTS  
 EPKAMPDLNGYQIRV

TRTRPLEQKLISEEDLAANDILDYKDDDDKV

Tag:	C-Myc/DDK
Purity:	> 80% as determined by SDS-PAGE and Coomassie blue staining
Concentration:	>0.05 µg/µL as determined by microplate BCA method
Labeling Method:	Labeled with [U- <sup>13</sup> C <sub>6</sub> , <sup>15</sup> N <sub>4</sub> ]-L-Arginine and [U- <sup>13</sup> C <sub>6</sub> , <sup>15</sup> N <sub>2</sub> ]-L-Lysine
Buffer:	25 mM Tris-HCl, 100 mM glycine, pH 7.3
Storage:	Store at -80°C. Avoid repeated freeze-thaw cycles.
Stability:	Stable for 3 months from receipt of products under proper storage and handling conditions.
RefSeq:	<u>NP_055724</u>
RefSeq Size:	6030
RefSeq ORF:	1095
Synonyms:	KIAA1036; TTCP 1
Locus ID:	22846


[View online »](#)

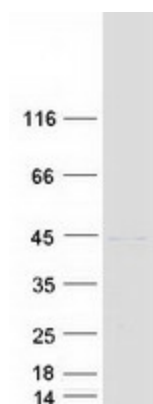
**UniProt ID:** Q7L8A9

**Cytogenetics:** 14q24.3

**Summary:** Tyrosine carboxypeptidase that removes the C-terminal tyrosine residue of alpha-tubulin, thereby regulating microtubule dynamics and function (PubMed:29146869). Acts as an angiogenesis inhibitor: inhibits migration, proliferation and network formation by endothelial cells as well as angiogenesis (PubMed:15467828, PubMed:16488400, PubMed:16707096, PubMed:19204325). This inhibitory effect is selective to endothelial cells as it does not affect the migration of smooth muscle cells or fibroblasts (PubMed:15467828, PubMed:16488400, PubMed:16707096).[UniProtKB/Swiss-Prot Function]

**Protein Families:** Secreted Protein

## Product images:



Coomassie blue staining of purified VASH1 protein (Cat# [TP308728]). The protein was produced from HEK293T cells transfected with VASH1 cDNA clone (Cat# [RC208728]) using MegaTran 2.0 (Cat# [TT210002]).