

Product datasheet for PH308703

MTMR2 (NM_016156) Human Mass Spec Standard

Product data:

Product Type:	Mass Spec Standards
Description:	MTMR2 MS Standard C13 and N15-labeled recombinant protein (NP_057240)
Species:	Human
Expression Host:	HEK293
Expression cDNA Clone or AA Sequence:	RC208703
Predicted MW:	73.4 kDa
Protein Sequence:	>RC208703 protein sequence Red=Cloning site Green=Tags(s)

METSSSCESLGSQPAAARPPSVDSLSSASTSHSENSVHTKSASVVSDDSI STSADNFSPDLRVLRESNKL
AEMEPELLPGENIKDMAKDVTYICPFTGAVRGTLTVTNYRLYFKSMERDPPFVLDASLGVINRVEKIGG
ASSRGENSYGLETVCKDIRNLRFAHKPEGRTRRSIFENLMKYAFPVSNLPLFAFEYKEVFPENGWKLVD
PLLEYRRQGIPNESWRITKINERYELCDTYPALLVVPANIPDEELKRVASFRSRGRIPVLSWIHPESQAT
ITRCSQPMVGVSGKRKEDEKYLQAIMDSNAQSHKIFIFDARPSVNAVANKAKGGGYESEDAYQNAELVF
LDIHNIHVMRESLRKLEIVYPNIEETHWLSNLESTHWLEHIKLILAGALRIADKVESGKTSVVVHCSDG
WDRTAQLTSLAMLMLDGYRTIRGFEVLVEKEWLSFGHRFQLRVGHGDKNHADADRSPVFLQFIDCVWQM
TRQFPTAFEFNEYFLITILDHLYSCLFGTFLCNSEQQRGKENL PKRTVSLWSYINSQLEDFTNPL YGSYS
NHVLYPVASMRHLELWVGYYIRWNPMPQEP IHNRYKELLAKRAELQKKVEELQREISNRSTSSSERAS
SPAQCVPVQTVV

TRTRPLEQKLI SEEDLAANDILDYKDDDDKV

Tag:	C-Myc/DDK
Purity:	> 80% as determined by SDS-PAGE and Coomassie blue staining
Concentration:	>0.05 µg/µL as determined by microplate BCA method
Labeling Method:	Labeled with [U- 13C6, 15N4]-L-Arginine and [U- 13C6, 15N2]-L-Lysine
Buffer:	25 mM Tris-HCl, 100 mM glycine, pH 7.3
Storage:	Store at -80°C. Avoid repeated freeze-thaw cycles.
Stability:	Stable for 3 months from receipt of products under proper storage and handling conditions.
RefSeq:	NP_057240
RefSeq Size:	4603



[View online »](#)

RefSeq ORF: 1929

Synonyms: CMT4B; CMT4B1

Locus ID: 8898

UniProt ID: [Q13614](#)

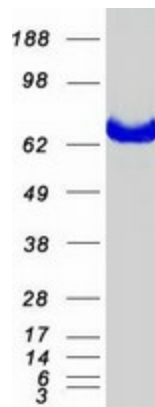
Cytogenetics: 11q21

Summary: This gene is a member of the myotubularin family of phosphoinositide lipid phosphatases. The encoded protein possesses phosphatase activity towards phosphatidylinositol-3-phosphate and phosphatidylinositol-3,5-bisphosphate. Mutations in this gene are a cause of Charcot-Marie-Tooth disease type 4B, an autosomal recessive demyelinating neuropathy. Alternatively spliced transcript variants encoding multiple isoforms have been found for this gene. [provided by RefSeq, Aug 2011]

Protein Families: Druggable Genome, Phosphatase

Protein Pathways: Fructose and mannose metabolism, Metabolic pathways, Riboflavin metabolism, Thiamine metabolism

Product images:



Coomassie blue staining of purified MTMR2 protein (Cat# [TP308703]). The protein was produced from HEK293T cells transfected with MTMR2 cDNA clone (Cat# [RC208703]) using MegaTran 2.0 (Cat# [TT210002]).