

Product datasheet for PH308702

MYG1 (NM_021640) Human Mass Spec Standard

Product data:

Product Type:	Mass Spec Standards
Description:	C12orf10 MS Standard C13 and N15-labeled recombinant protein (NP_067653)
Species:	Human
Expression Host:	HEK293
Expression cDNA Clone or AA Sequence:	RC208702
Predicted MW:	42.5 kDa
Protein Sequence:	>RC208702 protein sequence Red=Cloning site Green=Tags(s) MGRFLRGLLTLLLPPPLYTRHRMLGPESVPPPKRSRSLMAPPRIGTHNGTFHCDEALACALLRLLPE YRDAEIVRTRDPEKLASCDIVVDVGGYDPRRHRYDHHQSFSTETMSSLSPGKPWQTKLSSAGLIYLFHG HKLLAQLLGTSEEDSMVGTLYDKMYENFVEEVDAVDNGISQWAEGERPYALTTTLSARVARLNPTWNHPD QDTEAGFKRAMDLVQEEFLQRLDFYQHSWLPARALVEEALAQRFQVDPSTGEIVELAKGACPWKEHLYHLE SGLSPPVAIFFVIYTDQAGQWRIQCVPKEPHSFQSRLPLPEPWRGLRDEALDQVSGIPGCIFVHASGFIG GHRTRREGALSMARATLAQRSYLPQIS TRTRPLEQKLISEEDLAANDILDYKDDDDKV
Tag:	C-Myc/DDK
Purity:	> 80% as determined by SDS-PAGE and Coomassie blue staining
Concentration:	>0.05 µg/µL as determined by microplate BCA method
Labeling Method:	Labeled with [U- ¹³ C ₆ , ¹⁵ N ₄]-L-Arginine and [U- ¹³ C ₆ , ¹⁵ N ₂]-L-Lysine
Buffer:	25 mM Tris-HCl, 100 mM glycine, pH 7.3
Storage:	Store at -80°C. Avoid repeated freeze-thaw cycles.
Stability:	Stable for 3 months from receipt of products under proper storage and handling conditions.
RefSeq:	<u>NP_067653</u>
RefSeq Size:	1215
RefSeq ORF:	1128
Synonyms:	C12orf10; Gamm1; MST024; MSTP024; MYG
Locus ID:	60314



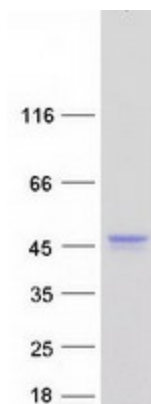
[View online »](#)

UniProt ID: [Q86UA3](#)

Cytogenetics: 12q13.13

Summary: 3'-5' RNA exonuclease which cleaves in situ on specific transcripts in both nucleus and mitochondrion. Involved in regulating spatially segregated organellar RNA processing, acts as a coordinator of nucleo-mitochondrial crosstalk (PubMed:31081026). In nucleolus, processes pre-ribosomal RNA involved in ribosome assembly and alters cytoplasmic translation. In mitochondrial matrix, processes 3'-termini of the mito-ribosomal and messenger RNAs and controls translation of mitochondrial proteins (Probable).[UniProtKB/Swiss-Prot Function]

Product images:



Coomassie blue staining of purified C12orf10 protein (Cat# [TP308702]). The protein was produced from HEK293T cells transfected with C12orf10 cDNA clone (Cat# [RC208702]) using MegaTran 2.0 (Cat# [TT210002]).