

Product datasheet for PH308698

GSK3 alpha (GSK3A) (NM_019884) Human Mass Spec Standard

Product data:

Product Type:	Mass Spec Standards
Description:	GSK3A MS Standard C13 and N15-labeled recombinant protein (NP_063937)
Species:	Human
Expression Host:	HEK293
Expression cDNA Clone or AA Sequence:	RC208698
Predicted MW:	51 kDa
Protein Sequence:	>RC208698 protein sequence Red=Cloning site Green=Tags(s)

MSGGGPSGGGPGGSGRARTSSF AEPGGGGGGGGGPGGSASGPGGTGGGKASVGMGGV GASSGGGPG
GSGGGSGGPGAGTSFPPPGVKLGRDSGKVTTVVATLGQGPERSQEVAYTDIKVINGSGFV VYQARLAE
TRELVAIKKVLQDKRFKNRELQIMRKL DHCNIVRLRYFFYSSGEKKDEL YLNLVLEYVPETVYRVARHFT
KAKLTIPILYVKVYMYQLFRSLAYIHSQGVCHRDIKPQNLLVDPDTAVLKL CDFGSAKQLVRGEPNYSYI
CSRYRRAPELIFGATDYTSSIDVWSAGCVLAELLLGQPIFPGDSGVDQLVEI IKVLGTPTREQIREMNP
NPN YTEFKFPQIKAHPWTKVFKSRTPPEAIALCSSLLEYTPSSR LSPLEACAH SFFDEL RCLGTQLPNNRPLP
PLFNFSAGELSIQPSLNAILIPPHLRSPAGTTTLTPSSQAL TETPTSSDWQST DATPTLTNSS

TRTRPLEQKLI SEEDLAANDILDYKDDDDKV

Tag:	C-Myc/DDK
Purity:	> 80% as determined by SDS-PAGE and Coomassie blue staining
Concentration:	>0.05 µg/µL as determined by microplate BCA method
Labeling Method:	Labeled with [U- ¹³ C ₆ , ¹⁵ N ₄]-L-Arginine and [U- ¹³ C ₆ , ¹⁵ N ₂]-L-Lysine
Buffer:	25 mM Tris-HCl, 100 mM glycine, pH 7.3
Storage:	Store at -80°C. Avoid repeated freeze-thaw cycles.
Stability:	Stable for 3 months from receipt of products under proper storage and handling conditions.
RefSeq:	<u>NP_063937</u>
RefSeq Size:	2200
RefSeq ORF:	1449
Locus ID:	2931



[View online »](#)

UniProt ID: [P49840](#), [A0A024R0L5](#)

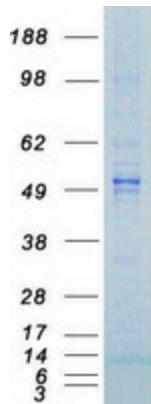
Cytogenetics: 19q13.2

Summary: This gene encodes a multifunctional Ser/Thr protein kinase that is implicated in the control of several regulatory proteins including glycogen synthase, and transcription factors, such as JUN. It also plays a role in the WNT and PI3K signaling pathways, as well as regulates the production of beta-amyloid peptides associated with Alzheimer's disease. [provided by RefSeq, Oct 2011]

Protein Families: Druggable Genome, Protein Kinase

Protein Pathways: Chemokine signaling pathway

Product images:



Coomassie blue staining of purified GSK3A protein (Cat# [TP308698]). The protein was produced from HEK293T cells transfected with GSK3A cDNA clone (Cat# [RC208698]) using MegaTran 2.0 (Cat# [TT210002]).