

Product datasheet for PH308694

WDR58 (THOC6) (NM_024339) Human Mass Spec Standard

Product data:

Product Type:	Mass Spec Standards
Description:	THOC6 MS Standard C13 and N15-labeled recombinant protein (NP_077315)
Species:	Human
Expression Host:	HEK293
Expression cDNA Clone or AA Sequence:	RC208694
Predicted MW:	37.5 kDa
Protein Sequence:	>RC208694 protein sequence Red=Cloning site Green=Tags(s) MERAVPLAVPLGQTEVFQALQRLHMTIFSQSVSPCGKFLAAGNNGQIAIFSLSSALSSEAKEESKPPV TFQAHDGPVYSMVSTDRHLLSAGDGEVKAWLWAEMLKKGCKELWRRQPPYRTSLEVPEINALLLVPKENS LILAGGDCQLHTMDLETGTFTRVLRGHTDYIHCLALRERSPEVLSGGEDGAVRLWDLRTAKEVQTIEVYK HEECSRPHNGRWIGCLATDSDWMVCGGGPALTLWHLRSSTPTTIFPIRAPQKHVTFYQDLILSAGQGRCV NQWQLSGELKAQVPGSSPGLLSLSLNQQPAAPECKVLTAAAGNSCRVDVFTNLGYRAFSLSF TRTRPLEQKLISEEDLAANDILDYKDDDDKV
Tag:	C-Myc/DDK
Purity:	> 80% as determined by SDS-PAGE and Coomassie blue staining
Concentration:	>0.05 µg/µL as determined by microplate BCA method
Labeling Method:	Labeled with [U- ¹³ C ₆ , ¹⁵ N ₄]-L-Arginine and [U- ¹³ C ₆ , ¹⁵ N ₂]-L-Lysine
Buffer:	25 mM Tris-HCl, 100 mM glycine, pH 7.3
Storage:	Store at -80°C. Avoid repeated freeze-thaw cycles.
Stability:	Stable for 3 months from receipt of products under proper storage and handling conditions.
RefSeq:	<u>NP_077315</u>
RefSeq Size:	1444
RefSeq ORF:	1023
Synonyms:	fSAP35; WDR58
Locus ID:	79228



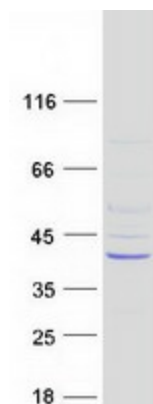
[View online »](#)

UniProt ID: [Q86W42](#)

Cytogenetics: 16p13.3

Summary: This gene encodes a subunit of the multi-protein THO complex, which is involved in coordination between transcription and mRNA processing. The THO complex is a component of the TREX (transcription/export) complex, which is involved in transcription and export of mRNAs. A missense mutation in this gene is associated with a neurodevelopmental disorder called Beaulieu-Boycott-Innes syndrome. [provided by RefSeq, Dec 2016]

Product images:



Coomassie blue staining of purified THOC6 protein (Cat# [TP308694]). The protein was produced from HEK293T cells transfected with THOC6 cDNA clone (Cat# [RC208694]) using MegaTran 2.0 (Cat# [TT210002]).